

## Product datasheet for **TA347510**

### XRCC4 Rabbit Polyclonal Antibody

#### Product data:

Product Type:	Primary Antibodies
Applications:	WB
Recommended Dilution:	WB: 1:500-1:3000
Reactivity:	Human
Host:	Rabbit
Isotype:	IgG
Clonality:	Polyclonal
Immunogen:	The immunogen for anti-XRCC4 Antibody: A synthesized peptide derived from human XRCC4
Formulation:	Rabbit IgG in phosphate buffered saline , pH 7.4, 150mM NaCl, 0.02% sodium azide and 50% glycerol. Store at -20?. Stable for 12 months from date of receipt
Concentration:	lot specific
Purification:	Affinity-chromatography
Conjugation:	Unconjugated
Storage:	Store at -20°C as received.
Stability:	Stable for 12 months from date of receipt.
Predicted Protein Size:	40 kDa
Gene Name:	X-ray repair complementing defective repair in Chinese hamster cells 4
Database Link:	<a href="#">NP_072044</a> <a href="#">Entrez Gene 7518 Human</a> <a href="#">Q13426</a>
Background:	XRCC4 Involved in DNA non-homologous end joining (NHEJ) required for double-strand break repair and V(D)J recombination. Binds to DNA and to DNA ligase IV (LIG4). The LIG4-XRCC4 complex is responsible for the NHEJ ligation step, and XRCC4 enhances the joining activity of LIG4. Binding of the LIG4-XRCC4 complex to DNA ends is dependent on the assembly of the DNA-dependent protein kinase complex DNA-PK to these DNA ends. Belongs to the XRCC4 family.
Synonyms:	SSMED



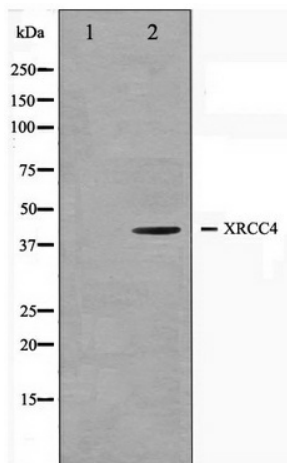
[View online »](#)

**Note:** XRCC4 antibody detects endogenous levels of total XRCC4

**Protein Families:** Druggable Genome

**Protein Pathways:** Non-homologous end-joining

**Product images:**



Western blot analysis on COLO205 cell lysate using XRCC4 Antibody