

Product datasheet for **TA347509**

XRCC3 Rabbit Polyclonal Antibody

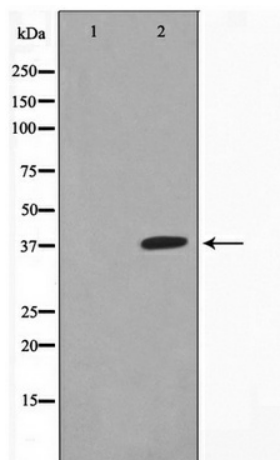
Product data:

| | |
|-------------------------|------------------------------------------------------------------------------------------------------------------------------------------------------------------------------------------------------------------------------------------------------|
| Product Type: | Primary Antibodies |
| Applications: | WB |
| Recommended Dilution: | WB: 1:500-1:3000 |
| Reactivity: | Human |
| Host: | Rabbit |
| Isotype: | IgG |
| Clonality: | Polyclonal |
| Immunogen: | The immunogen for anti-XRCC3 Antibody: A synthesized peptide derived from human XRCC3 |
| Formulation: | Rabbit IgG in phosphate buffered saline , pH 7.4, 150mM NaCl, 0.02% sodium azide and 50% glycerol. Store at -20?. Stable for 12 months from date of receipt |
| Concentration: | lot specific |
| Purification: | Affinity-chromatography |
| Conjugation: | Unconjugated |
| Storage: | Store at -20°C as received. |
| Stability: | Stable for 12 months from date of receipt. |
| Predicted Protein Size: | 38 kDa |
| Gene Name: | X-ray repair complementing defective repair in Chinese hamster cells 3 |
| Database Link: | NP_005423 Entrez Gene 7517 Human O43542 |
| Background: | XRCC3 Involved in the homologous recombination repair (HRR) pathway of double-stranded DNA, thought to repair chromosomal fragmentation, translocations and deletions. Belongs to the recA family. RAD51 subfamily. Interacts with RAD51C and RAD51. |
| Synonyms: | CMM6 |
| Note: | XRCC3 antibody detects endogenous levels of total XRCC3 |
| Protein Families: | Druggable Genome |
| Protein Pathways: | Homologous recombination |



[View online »](#)

Product images:



Western blot analysis on HepG2 cell lysate using XRCC3 Antibody