

Product datasheet for **TA347508**

XRCC1 Rabbit Polyclonal Antibody

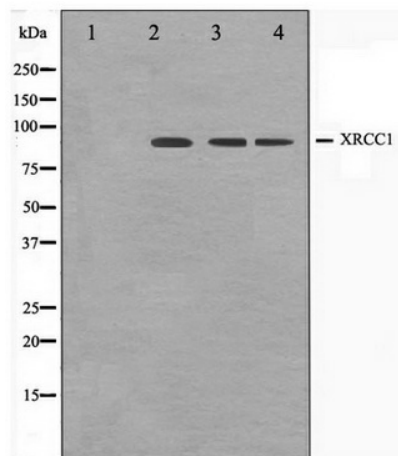
Product data:

Product Type:	Primary Antibodies
Applications:	WB
Recommended Dilution:	WB: 1:500-1:3000
Reactivity:	Human, Mouse, Rat
Host:	Rabbit
Isotype:	IgG
Clonality:	Polyclonal
Immunogen:	The immunogen for anti-XRCC1 Antibody: A synthesized peptide derived from human XRCC1
Formulation:	Rabbit IgG in phosphate buffered saline , pH 7.4, 150mM NaCl, 0.02% sodium azide and 50% glycerol. Store at -20?. Stable for 12 months from date of receipt
Concentration:	lot specific
Purification:	Affinity-chromatography
Conjugation:	Unconjugated
Storage:	Store at -20°C as received.
Stability:	Stable for 12 months from date of receipt.
Predicted Protein Size:	90 kDa
Gene Name:	X-ray repair complementing defective repair in Chinese hamster cells 1
Database Link:	NP_006288 Entrez Gene 22594 MouseEntrez Gene 84495 RatEntrez Gene 7515 Human P18887
Background:	XRCC1 Corrects defective DNA strand-break repair and sister chromatid exchange following treatment with ionizing radiation and alkylating agents. Homodimer. Interacts with polynucleotide kinase (PNK), DNA polymerase-beta (POLB) and DNA ligase III (LIG3).
Synonyms:	RCC
Note:	XRCC1 antibody detects endogenous levels of total XRCC1
Protein Families:	Druggable Genome
Protein Pathways:	Base excision repair



[View online »](#)

Product images:



Western blot analysis on Jurkat, COS7 and HuvEc cell lysate using XRCC1 Antibody