

Product datasheet for **TA347507**

XPF (ERCC4) Rabbit Polyclonal Antibody

Product data:

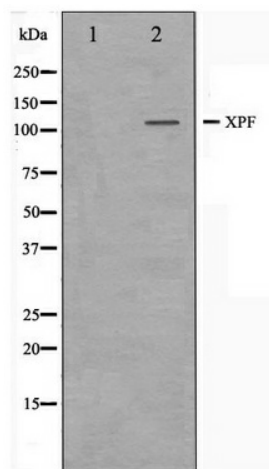
Product Type:	Primary Antibodies
Applications:	WB
Recommended Dilution:	WB: 1:500-1:3000
Reactivity:	Human, Mouse
Host:	Rabbit
Isotype:	IgG
Clonality:	Polyclonal
Immunogen:	The immunogen for anti-XPF Antibody: A synthesized peptide derived from human XPF
Formulation:	Rabbit IgG in phosphate buffered saline , pH 7.4, 150mM NaCl, 0.02% sodium azide and 50% glycerol. Store at -20?. Stable for 12 months from date of receipt
Concentration:	lot specific
Purification:	Affinity-chromatography
Conjugation:	Unconjugated
Storage:	Store at -20°C as received.
Stability:	Stable for 12 months from date of receipt.
Predicted Protein Size:	103 kDa
Gene Name:	ERCC excision repair 4, endonuclease catalytic subunit
Database Link:	NP_005227 Entrez Gene 50505 Mouse Entrez Gene 2072 Human Q92889
Background:	ERCC4 Structure-specific DNA repair endonuclease responsible for the 5-prime incision during DNA repair. Involved in homologous recombination that assists in removing interstrand cross-link. Belongs to the XPF family. Heterodimer composed of ERCC1 and XPF/ERCC4.
Synonyms:	ERCC11; FANCCQ; RAD1; XFEPS; XPF
Note:	XPF antibody detects endogenous levels of total XPF
Protein Families:	Druggable Genome



[View online »](#)

Protein Pathways: Nucleotide excision repair

Product images:



Western blot analysis on 293 cell lysate using XPF Antibody