

Product datasheet for **TA347506**

XPA Rabbit Polyclonal Antibody

Product data:

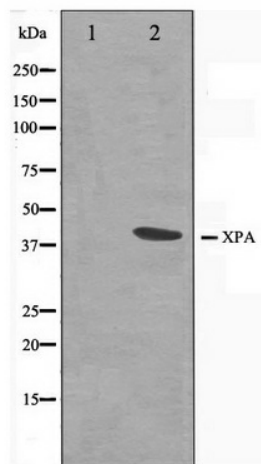
Product Type:	Primary Antibodies
Applications:	WB
Recommended Dilution:	WB: 1:500-1:3000
Reactivity:	Human, Mouse
Host:	Rabbit
Isotype:	IgG
Clonality:	Polyclonal
Immunogen:	The immunogen for anti-XPA Antibody: A synthesized peptide derived from human XPA
Formulation:	Rabbit IgG in phosphate buffered saline , pH 7.4, 150mM NaCl, 0.02% sodium azide and 50% glycerol. Store at -20?. Stable for 12 months from date of receipt
Concentration:	lot specific
Purification:	Affinity-chromatography
Conjugation:	Unconjugated
Storage:	Store at -20°C as received.
Stability:	Stable for 12 months from date of receipt.
Predicted Protein Size:	40 kDa
Gene Name:	XPA, DNA damage recognition and repair factor
Database Link:	NP_000371 Entrez Gene 22590 Mouse Entrez Gene 7507 Human P23025
Background:	XPA Involved in DNA excision repair. Initiates repair by binding to damaged sites with various affinities, depending on the photoproduct and the transcriptional state of the region. Required for UV-induced CHK1 phosphorylation and the recruitment of CEP164 to cyclobutane pyrimidine dimmers (CPD), sites of DNA damage after UV irradiation.
Synonyms:	XP1; XPAC
Note:	XPA antibody detects endogenous levels of total XPA
Protein Families:	Druggable Genome



[View online »](#)

Protein Pathways: Nucleotide excision repair

Product images:



Western blot analysis on COLO205 cell lysate using XPA Antibody