

## Product datasheet for **TA347504**

### USF2 Rabbit Polyclonal Antibody

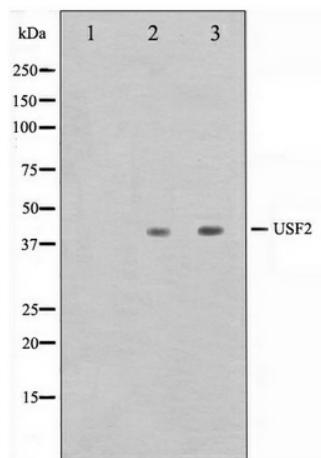
#### Product data:

Product Type:	Primary Antibodies
Applications:	WB
Recommended Dilution:	WB: 1:500-1:3000
Reactivity:	Human, Mouse, Rat
Host:	Rabbit
Isotype:	IgG
Clonality:	Polyclonal
Immunogen:	The immunogen for anti-USF2 Antibody: A synthesized peptide derived from human USF2
Formulation:	Rabbit IgG in phosphate buffered saline , pH 7.4, 150mM NaCl, 0.02% sodium azide and 50% glycerol. Store at -20?. Stable for 12 months from date of receipt
Concentration:	lot specific
Purification:	Affinity-chromatography
Conjugation:	Unconjugated
Storage:	Store at -20°C as received.
Stability:	Stable for 12 months from date of receipt.
Predicted Protein Size:	40 kDa
Gene Name:	upstream transcription factor 2, c-fos interacting
Database Link:	<a href="#">NP_997174</a> <a href="#">Entrez Gene 22282 Mouse</a> <a href="#">Entrez Gene 81817 Rat</a> <a href="#">Entrez Gene 7392 Human</a> <a href="#">Q15853</a>
Background:	USF2 Transcription factor that binds to a symmetrical DNA sequence (E-boxes) (5'-CACGTG-3') that is found in a variety of viral and cellular promoters. Interacts with MAF. Efficient DNA binding requires dimerization with another bHLH protein. Binds DNA as a homodimer or a heterodimer (USF1/USF2).
Synonyms:	bHLHb12; FIP
Note:	USF2 antibody detects endogenous levels of total USF2
Protein Families:	Druggable Genome, Transcription Factors



[View online »](#)

## Product images:



Western blot analysis on HeLa and HepG2 cell lysate using USF2 Antibody