

Product datasheet for **TA347503**

Ube1L (UBA7) Rabbit Polyclonal Antibody

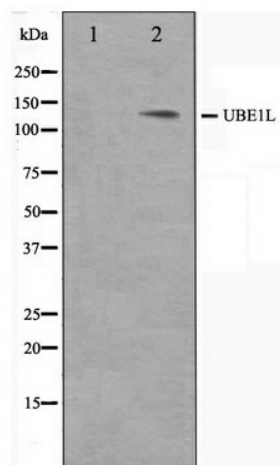
Product data:

Product Type:	Primary Antibodies
Applications:	WB
Recommended Dilution:	WB: 1:500-1:3000
Reactivity:	Human
Host:	Rabbit
Isotype:	IgG
Clonality:	Polyclonal
Immunogen:	The immunogen for anti-UBE1L Antibody: A synthesized peptide derived from human UBE1L
Formulation:	Rabbit IgG in phosphate buffered saline , pH 7.4, 150mM NaCl, 0.02% sodium azide and 50% glycerol. Store at -20?. Stable for 12 months from date of receipt
Concentration:	lot specific
Purification:	Affinity-chromatography
Conjugation:	Unconjugated
Storage:	Store at -20°C as received.
Stability:	Stable for 12 months from date of receipt.
Predicted Protein Size:	112 kDa
Gene Name:	ubiquitin like modifier activating enzyme 7
Database Link:	NP_003326 Entrez Gene 7318 Human P41226
Background:	UBE1L Activates ubiquitin by first adenylating with ATP its C- terminal glycine residue and thereafter linking this residue to the side chain of a cysteine residue in E1, yielding an ubiquitin- E1 thioester and free AMP. Belongs to the ubiquitin-activating E1 family.
Synonyms:	D8; UBA1B; UBE1L; UBE2
Note:	UBE1L antibody detects endogenous levels of total UBE1L
Protein Families:	Druggable Genome
Protein Pathways:	Parkinson's disease, Ubiquitin mediated proteolysis



[View online »](#)

Product images:



Western blot analysis on HeLa cell lysate using UBE1L Antibody