

Product datasheet for **TA347502**

UBA2 Rabbit Polyclonal Antibody

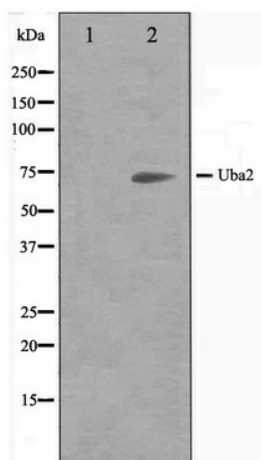
Product data:

Product Type:	Primary Antibodies
Applications:	WB
Recommended Dilution:	WB: 1:500-1:3000
Reactivity:	Human
Host:	Rabbit
Isotype:	IgG
Clonality:	Polyclonal
Immunogen:	The immunogen for anti-Uba2 Antibody: A synthesized peptide derived from human Uba2
Formulation:	Rabbit IgG in phosphate buffered saline , pH 7.4, 150mM NaCl, 0.02% sodium azide and 50% glycerol. Store at -20?. Stable for 12 months from date of receipt
Concentration:	lot specific
Purification:	Affinity-chromatography
Conjugation:	Unconjugated
Storage:	Store at -20°C as received.
Stability:	Stable for 12 months from date of receipt.
Predicted Protein Size:	71 kDa
Gene Name:	ubiquitin like modifier activating enzyme 2
Database Link:	NP_005490 Entrez Gene 10054 Human Q9UBT2
Background:	SAE2 a protein of the ubiquitin-activating E1 family. Acts as a UBL1 E1 ligase. Mediates ATP-dependent activation of UBL1 and formation of a thiolester with a conserved cysteine residue on SAE2.
Synonyms:	ARX; HRIHFB2115; SAE2
Note:	Uba2 antibody detects endogenous levels of total Uba2
Protein Pathways:	Ubiquitin mediated proteolysis



[View online »](#)

Product images:



Western blot analysis on 293 cell lysate using Uba2 Antibody