

## Product datasheet for **TA347501**

### Tyrosinase (TYR) Rabbit Polyclonal Antibody

#### Product data:

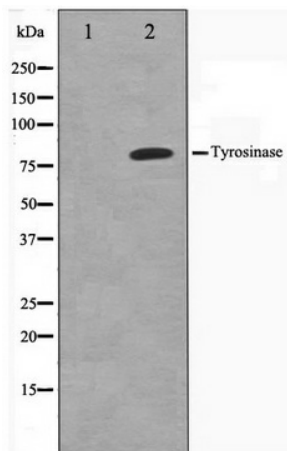
Product Type:	Primary Antibodies
Applications:	WB
Reactivity:	Human
Host:	Rabbit
Isotype:	IgG
Clonality:	Polyclonal
Immunogen:	The immunogen for anti-Tyrosinase Antibody: A synthesized peptide derived from human Tyrosinase
Formulation:	Rabbit IgG in phosphate buffered saline , pH 7.4, 150mM NaCl, 0.02% sodium azide and 50% glycerol. Store at -20?. Stable for 12 months from date of receipt
Concentration:	lot specific
Purification:	Affinity-chromatography
Conjugation:	Unconjugated
Storage:	Store at -20°C as received.
Stability:	Stable for 12 months from date of receipt.
Predicted Protein Size:	80 kDa
Gene Name:	tyrosinase
Database Link:	<a href="#">NP_000363</a> <a href="#">Entrez Gene 7299 Human</a> <a href="#">P14679</a>
Background:	TYR This is a copper-containing oxidase that functions in the formation of pigments such as melanins and other polyphenolic compounds. Catalyzes the rate-limiting conversions of tyrosine to DOPA, DOPA to DOPA-quinone and possibly 5,6-dihydroxyindole to indole-5,6 quinone.
Synonyms:	ATN; CMM8; OCA1; OCA1A; OCAIA; SHEP3
Note:	Tyrosinase antibody detects endogenous levels of total Tyrosinase
Protein Families:	Transmembrane



[View online »](#)

Protein Pathways: Melanogenesis, Metabolic pathways, Riboflavin metabolism, Tyrosine metabolism

### Product images:



Western blot analysis on COS7 cell lysate using Tyrosinase Antibody