

Product datasheet for **TA347497**

TIMP4 Rabbit Polyclonal Antibody

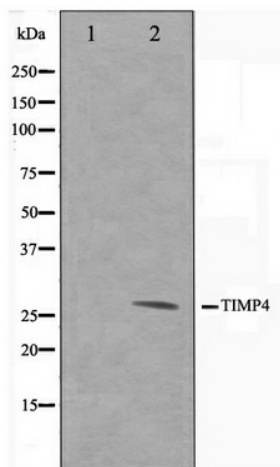
Product data:

Product Type:	Primary Antibodies
Applications:	WB
Recommended Dilution:	WB: 1:500-1:3000
Reactivity:	Human, Mouse, Rat
Host:	Rabbit
Isotype:	IgG
Clonality:	Polyclonal
Immunogen:	The immunogen for anti-TIMP4 Antibody: A synthesized peptide derived from human TIMP4
Formulation:	Rabbit IgG in phosphate buffered saline , pH 7.4, 150mM NaCl, 0.02% sodium azide and 50% glycerol. Store at -20?. Stable for 12 months from date of receipt
Concentration:	lot specific
Purification:	Affinity-chromatography
Conjugation:	Unconjugated
Storage:	Store at -20°C as received.
Stability:	Stable for 12 months from date of receipt.
Predicted Protein Size:	26 kDa
Gene Name:	TIMP metalloproteinase inhibitor 4
Database Link:	NP_003247 Entrez Gene 110595 Mouse Entrez Gene 680130 Rat Entrez Gene 7079 Human Q99727
Background:	TIMP4 Complexes with metalloproteinases (such as collagenases) and irreversibly inactivates them by binding to their catalytic zinc cofactor. Known to act on MMP1, MMP2, MMP3, MMP7 and MMP 9. Belongs to the protease inhibitor I35 (TIMP) family.
Synonyms:	TIMP metalloproteinase inhibitor 4; tissue inhibitor of metalloproteinase 4
Note:	TIMP4 antibody detects endogenous levels of total TIMP4
Protein Families:	Druggable Genome, Secreted Protein



[View online »](#)

Product images:



Western blot analysis on NIH-3T3 cell lysate using TIMP4 Antibody