

## Product datasheet for **TA347496**

### Sumo 1 (SUMO1) Rabbit Polyclonal Antibody

#### Product data:

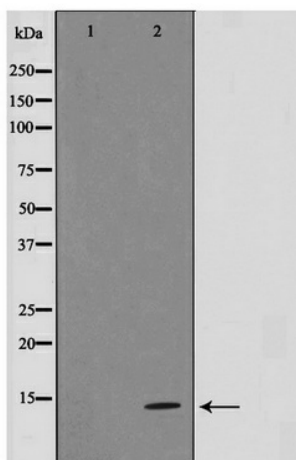
Product Type:	Primary Antibodies
Applications:	WB
Recommended Dilution:	WB: 1:500-1:3000
Reactivity:	Human, Mouse, Rat
Host:	Rabbit
Isotype:	IgG
Clonality:	Polyclonal
Immunogen:	The immunogen for anti-Sumo1 Antibody: A synthesized peptide derived from human Sumo1
Formulation:	Rabbit IgG in phosphate buffered saline , pH 7.4, 150mM NaCl, 0.02% sodium azide and 50% glycerol. Store at -20?. Stable for 12 months from date of receipt
Concentration:	lot specific
Purification:	Affinity-chromatography
Conjugation:	Unconjugated
Storage:	Store at -20°C as received.
Stability:	Stable for 12 months from date of receipt.
Predicted Protein Size:	12 kDa
Gene Name:	small ubiquitin-like modifier 1
Database Link:	<a href="#">NP_003343</a> <a href="#">Entrez Gene 22218 MouseEntrez Gene 301442 RatEntrez Gene 7341 Human P63165</a>
Background:	SUMO1 Ubiquitin-like protein which can be covalently attached to target lysines as a monomer. Does not seem to be involved in protein degradation and may function as an antagonist of ubiquitin in the degradation process. Plays a role in a number of cellular processes such as nuclear transport, DNA replication and repair, mitosis and signal transduction.
Synonyms:	DAP1; GMP1; OFC10; PIC1; SENP2; SMT3; SMT3C; SMT3H3; UBL1
Note:	Sumo1 antibody detects endogenous levels of total Sumo1



[View online »](#)

Protein Families: Druggable Genome, Stem cell - Pluripotency, Transcription Factors

**Product images:**



Western blot analysis on 293 cell lysate using Sumo1 Antibody