

Product datasheet for **TA347495**

SENP8 Rabbit Polyclonal Antibody

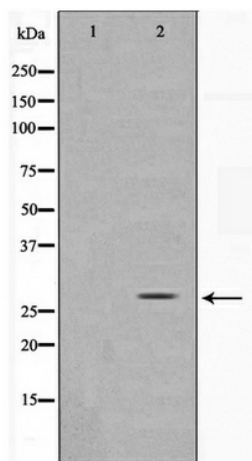
Product data:

Product Type:	Primary Antibodies
Applications:	WB
Recommended Dilution:	WB: 1:500-1:3000
Reactivity:	Human, Mouse, Rat
Host:	Rabbit
Isotype:	IgG
Clonality:	Polyclonal
Immunogen:	The immunogen for anti-SENP8 Antibody: A synthesized peptide derived from human SENP8
Formulation:	Rabbit IgG in phosphate buffered saline , pH 7.4, 150mM NaCl, 0.02% sodium azide and 50% glycerol. Store at -20?. Stable for 12 months from date of receipt
Concentration:	lot specific
Purification:	Affinity-chromatography
Conjugation:	Unconjugated
Storage:	Store at -20°C as received.
Stability:	Stable for 12 months from date of receipt.
Predicted Protein Size:	27 kDa
Gene Name:	SUMO/sentrin peptidase family member, NEDD8 specific
Database Link:	NP_660205 Entrez Gene 71599 MouseEntrez Gene 315723 RatEntrez Gene 123228 Human Q96LD8
Background:	SENP8 Protease that catalyzes two essential functions in the NEDD8 pathway: processing of full-length NEDD8 to its mature form and deconjugation of NEDD8 from targeted proteins such as cullins or p53. Belongs to the peptidase C48 family.
Synonyms:	DEN1; NEDP1; PRSC2
Note:	SENP8 antibody detects endogenous levels of total SENP8
Protein Families:	Druggable Genome, Protease



[View online »](#)

Product images:



Western blot analysis on HuvEc cell lysate using
SENP8 Antibody