

Product datasheet for **TA347494**

SEN7 Rabbit Polyclonal Antibody

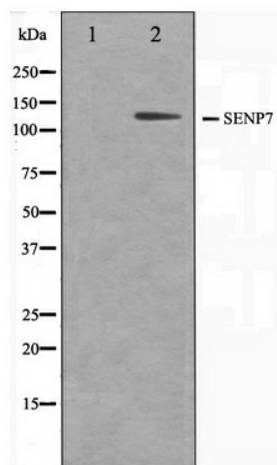
Product data:

Product Type:	Primary Antibodies
Applications:	WB
Recommended Dilution:	WB: 1:500-1:3000
Reactivity:	Human, Mouse
Host:	Rabbit
Isotype:	IgG
Clonality:	Polyclonal
Immunogen:	The immunogen for anti-SEN7 Antibody: A synthesized peptide derived from human SEN7
Formulation:	Rabbit IgG in phosphate buffered saline , pH 7.4, 150mM NaCl, 0.02% sodium azide and 50% glycerol. Store at -20?. Stable for 12 months from date of receipt
Concentration:	lot specific
Purification:	Affinity-chromatography
Conjugation:	Unconjugated
Storage:	Store at -20°C as received.
Stability:	Stable for 12 months from date of receipt.
Predicted Protein Size:	112 kDa
Gene Name:	SUMO1/sentrin specific peptidase 7
Database Link:	NP_065705 Entrez Gene 66315 Mouse Entrez Gene 57337 Human Q9BQF6
Background:	SEN7 Protease that deconjugates SUMO2 and SUMO3 from targeted proteins, but not SUMO1. Catalyzes the deconjugation of poly-SUMO2 and poly-SUMO3 chains. Has very low efficiency in processing full-length SUMO proteins to their mature forms. Belongs to the peptidase C48 family. 4 isoforms of the human protein are produced by alternative splicing.
Synonyms:	KIAA1707; MGC157730
Note:	SEN7 antibody detects endogenous levels of total SEN7
Protein Families:	Druggable Genome, Protease



[View online »](#)

Product images:



Western blot analysis on HuvEc cell lysate using
SENP7 Antibody