

## Product datasheet for **TA347493**

### SENP5 Rabbit Polyclonal Antibody

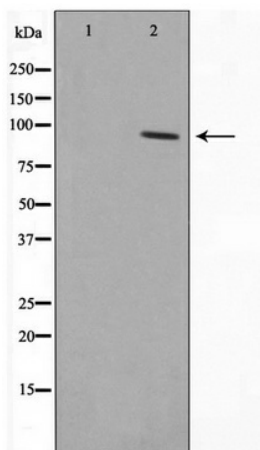
#### Product data:

Product Type:	Primary Antibodies
Applications:	WB
Recommended Dilution:	WB: 1:500-1:3000
Reactivity:	Human, Mouse
Host:	Rabbit
Isotype:	IgG
Clonality:	Polyclonal
Immunogen:	The immunogen for anti-SENP5 Antibody: A synthesized peptide derived from human SENP5
Formulation:	Rabbit IgG in phosphate buffered saline , pH 7.4, 150mM NaCl, 0.02% sodium azide and 50% glycerol. Store at -20?. Stable for 12 months from date of receipt
Concentration:	lot specific
Purification:	Affinity-chromatography
Conjugation:	Unconjugated
Storage:	Store at -20°C as received.
Stability:	Stable for 12 months from date of receipt.
Predicted Protein Size:	86 kDa
Gene Name:	SUMO1/sentrin specific peptidase 5
Database Link:	<a href="#">NP_689912</a> <a href="#">Entrez Gene 320213 Mouse</a> <a href="#">Entrez Gene 205564 Human</a> <a href="#">Q96HI0</a>
Background:	SENP5 Protease that catalyzes two essential functions in the SUMO pathway: processing of full-length SUMO3 to its mature form and deconjugation of SUMO2 and SUMO3 from targeted proteins. Has weak proteolytic activity against full-length SUMO1 or SUMO1 conjugates.
Synonyms:	DKFZp564O1016; FLJ42398; MGC27076
Note:	SENP5 antibody detects endogenous levels of total SENP5
Protein Families:	Druggable Genome, Protease



[View online »](#)

## Product images:



Western blot analysis on COS7 cell lysate using  
SENP5 Antibody