

Product datasheet for **TA347492**

SENP1 Rabbit Polyclonal Antibody

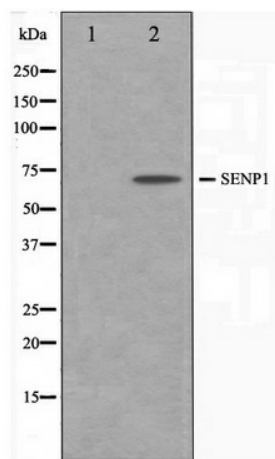
Product data:

Product Type:	Primary Antibodies
Applications:	WB
Recommended Dilution:	WB: 1:500-1:3000
Reactivity:	Human, Mouse
Host:	Rabbit
Clonality:	Polyclonal
Immunogen:	The immunogen for anti-SENP1 Antibody: A synthesized peptide derived from human SENP1
Concentration:	lot specific
Purification:	Affinity-chromatography
Conjugation:	Unconjugated
Storage:	Store at -20°C as received.
Stability:	Stable for 12 months from date of receipt.
Predicted Protein Size:	73 kDa
Gene Name:	SUMO1/sentrin specific peptidase 1
Database Link:	NP_055369 Entrez Gene 223870 Mouse Entrez Gene 29843 Human Q9P0U3
Background:	SENP1 Protease that catalyzes two essential functions in the SUMO pathway: processing of full-length SUMO1, SUMO2 and SUMO3 to their mature forms and deconjugation of SUMO1, SUMO2 and SUMO3 from targeted proteins. Deconjugates SUMO1 from HIPK2. Deconjugates SUMO1 from HDAC1, which decreases its transcriptional repression activity.
Synonyms:	SuPr-2
Note:	SENP1 antibody detects endogenous levels of total SENP1
Protein Families:	Druggable Genome, Protease



[View online »](#)

Product images:



Western blot analysis on Jurkat cell lysate using
SENP1 Antibody