

Product datasheet for **TA347488**

NEDD8 Rabbit Polyclonal Antibody

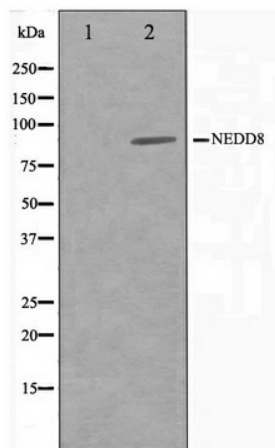
Product data:

Product Type:	Primary Antibodies
Applications:	WB
Recommended Dilution:	WB: 1:500-1:3000
Reactivity:	Human, Mouse, Rat
Host:	Rabbit
Isotype:	IgG
Clonality:	Polyclonal
Immunogen:	The immunogen for anti-NEDD8 Antibody: A synthesized peptide derived from human NEDD8
Formulation:	Rabbit IgG in phosphate buffered saline , pH 7.4, 150mM NaCl, 0.02% sodium azide and 50% glycerol. Store at -20?. Stable for 12 months from date of receipt
Concentration:	lot specific
Purification:	Affinity-chromatography
Conjugation:	Unconjugated
Storage:	Store at -20°C as received.
Stability:	Stable for 12 months from date of receipt.
Predicted Protein Size:	85 kDa
Gene Name:	neural precursor cell expressed, developmentally down-regulated 8
Database Link:	NP_006147 Entrez Gene 18002 Mouse Entrez Gene 25490 Rat Entrez Gene 4738 Human Q15843
Background:	NEDD8 a member of the ubiquitin family of proteins. Approximately 60% identical to ubiquitin protein.. Activated by an E1-like complex, consisting of App-b1 and Uba3 and then linked to the E2-like enzyme, Ubc12. The major target protein modified by nedd8 is cullin-4a.
Synonyms:	NEDD-8
Note:	NEDD8 antibody detects endogenous levels of total NEDD8
Protein Families:	Druggable Genome



[View online »](#)

Product images:



Western blot analysis on Jurkat cell lysate using NEDD8 Antibody