

Product datasheet for **TA347486**

HAT1 Rabbit Polyclonal Antibody

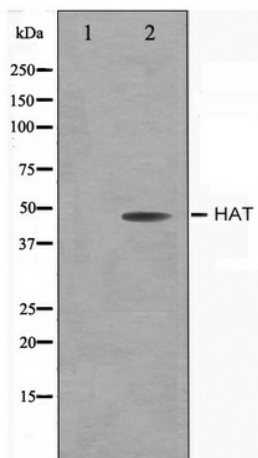
Product data:

Product Type:	Primary Antibodies
Applications:	WB
Recommended Dilution:	WB: 1:500-1:3000
Reactivity:	Human, Mouse, Rat
Host:	Rabbit
Isotype:	IgG
Clonality:	Polyclonal
Immunogen:	The immunogen for anti-HAT Antibody: A synthesized peptide derived from human HAT
Formulation:	Rabbit IgG in phosphate buffered saline , pH 7.4, 150mM NaCl, 0.02% sodium azide and 50% glycerol. Store at -20?. Stable for 12 months from date of receipt
Concentration:	lot specific
Purification:	Affinity-chromatography
Conjugation:	Unconjugated
Storage:	Store at -20°C as received.
Stability:	Stable for 12 months from date of receipt.
Predicted Protein Size:	49 kDa
Gene Name:	histone acetyltransferase 1
Database Link:	NP_001028257 Entrez Gene 107435 MouseEntrez Gene 296501 RatEntrez Gene 8520 Human Q14929
Background:	HAT1 May play a role in telomeric silencing. Acetylates soluble but not nucleosomal H4 at 'Lys-5' and 'Lys-12' and acetylates histone H2A at 'Lys-5'. HAT1 has intrinsic substrate specificity that modifies lysine in recognition sequence GXGKXG. Belongs to the HAT1 family.
Synonyms:	histone acetyltransferase 1; KAT1
Note:	HAT antibody detects endogenous levels of total HAT
Protein Families:	Druggable Genome



[View online »](#)

Product images:



Western blot analysis on LOVO cell lysate using HAT Antibody