

Product datasheet for **TA347485**

EDD (UBR5) Rabbit Polyclonal Antibody

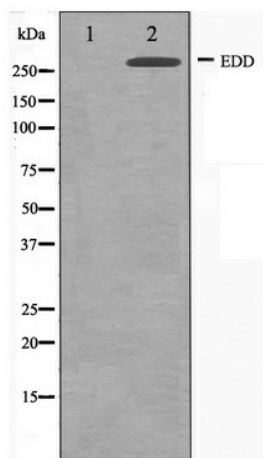
Product data:

Product Type:	Primary Antibodies
Applications:	WB
Recommended Dilution:	WB: 1:500-1:3000
Reactivity:	Human, Mouse
Host:	Rabbit
Isotype:	IgG
Clonality:	Polyclonal
Immunogen:	The immunogen for anti-EDD Antibody: A synthesized peptide derived from human EDD
Formulation:	Rabbit IgG in phosphate buffered saline , pH 7.4, 150mM NaCl, 0.02% sodium azide and 50% glycerol. Store at -20?. Stable for 12 months from date of receipt
Concentration:	lot specific
Purification:	Affinity-chromatography
Conjugation:	Unconjugated
Storage:	Store at -20°C as received.
Stability:	Stable for 12 months from date of receipt.
Predicted Protein Size:	309 kDa
Gene Name:	ubiquitin protein ligase E3 component n-recognin 5
Database Link:	NP_001269802 Entrez Gene 70790 Mouse Entrez Gene 51366 Human O95071
Background:	UBR5 E3 ubiquitin-protein ligase which is a component of the N-end rule pathway. Recognizes and binds to proteins bearing specific amino-terminal residues that are destabilizing according to the N-end rule, leading to their ubiquitination and subsequent degradation.
Synonyms:	DD5; EDD; EDD1; HYD
Note:	EDD antibody detects endogenous levels of total EDD
Protein Families:	Druggable Genome
Protein Pathways:	Ubiquitin mediated proteolysis



[View online »](#)

Product images:



Western blot analysis on A549 cell lysate using EDD Antibody