

Product datasheet for **TA347483**

SAE1 Rabbit Polyclonal Antibody

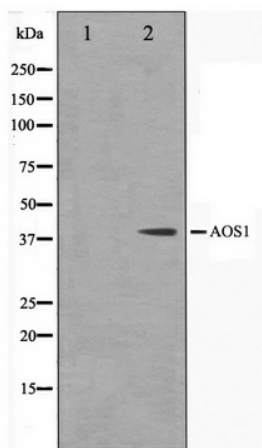
Product data:

Product Type:	Primary Antibodies
Applications:	WB
Recommended Dilution:	WB: 1:500-1:3000
Reactivity:	Human, Mouse, Rat
Host:	Rabbit
Isotype:	IgG
Clonality:	Polyclonal
Immunogen:	The immunogen for anti-AOS1 Antibody: A synthesized peptide derived from human AOS1
Formulation:	Rabbit IgG in phosphate buffered saline , pH 7.4, 150mM NaCl, 0.02% sodium azide and 50% glycerol. Store at -20?. Stable for 12 months from date of receipt
Concentration:	lot specific
Purification:	Affinity-chromatography
Conjugation:	Unconjugated
Storage:	Store at -20°C as received.
Stability:	Stable for 12 months from date of receipt.
Predicted Protein Size:	38 kDa
Gene Name:	SUMO1 activating enzyme subunit 1
Database Link:	NP_005491 Entrez Gene 56459 MouseEntrez Gene 308384 RatEntrez Gene 10055 Human Q9UBE0
Background:	UBLE1A The dimeric enzyme acts as a E1 ligase for SUMO1, SUMO2, SUMO3, and probably SUMO4. It mediates ATP-dependent activation of SUMO proteins and formation of a thioester with a conserved cysteine residue on SAE2. Belongs to the ubiquitin-activating E1 family. Heterodimer of SAE1 and SAE2. The complex binds SUMO proteins via SAE2.
Synonyms:	AOS1; HSPC140; SUA1; UBLE1A
Note:	AOS1 antibody detects endogenous levels of total AOS1
Protein Pathways:	Ubiquitin mediated proteolysis



[View online »](#)

Product images:



Western blot analysis on 293 cell lysate using AOS1 Antibody