

## Product datasheet for **TA347480**

### Thrombin Receptor (F2R) Rabbit Polyclonal Antibody

#### Product data:

Product Type:	Primary Antibodies
Applications:	WB
Recommended Dilution:	WB: 1:500-1:3000
Reactivity:	Human
Host:	Rabbit
Isotype:	IgG
Clonality:	Polyclonal
Immunogen:	The immunogen for anti-Thrombin Receptor Antibody: A synthesized peptide derived from human Thrombin Receptor
Formulation:	Rabbit IgG in phosphate buffered saline , pH 7.4, 150mM NaCl, 0.02% sodium azide and 50% glycerol. Store at -20?. Stable for 12 months from date of receipt
Concentration:	lot specific
Purification:	Affinity-chromatography
Conjugation:	Unconjugated
Storage:	Store at -20°C as received.
Stability:	Stable for 12 months from date of receipt.
Predicted Protein Size:	48 kDa
Gene Name:	coagulation factor II thrombin receptor
Database Link:	<a href="#">NP_001983</a> <a href="#">Entrez Gene 2149 Human</a> <a href="#">P25116</a>
Background:	PAR1 a G-protein coupled high-affinity receptor for activated thrombin or trypsin. Coupled to G proteins that stimulate phosphoinositide hydrolysis. Coupled to G proteins that stimulate phosphoinositide hydrolysis. May play a role in platelet activation and in vascular development.
Synonyms:	CF2R; HTR; PAR-1; PAR1; TR
Note:	Thrombin Receptor antibody detects endogenous levels of total Thrombin Receptor

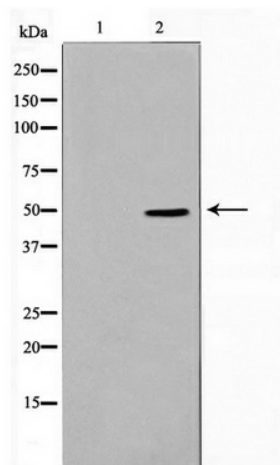


[View online »](#)

**Protein Families:** Druggable Genome, GPCR, Transmembrane

**Protein Pathways:** Calcium signaling pathway, Complement and coagulation cascades, Endocytosis, Neuroactive ligand-receptor interaction, Regulation of actin cytoskeleton

**Product images:**



Western blot analysis on HeLa cell lysate using Thrombin Receptor Antibody