

## Product datasheet for **TA347477**

### TGF beta Receptor II (TGFB2) Rabbit Polyclonal Antibody

#### Product data:

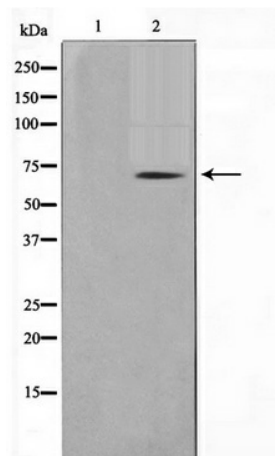
Product Type:	Primary Antibodies
Applications:	WB
Recommended Dilution:	WB: 1:500-1:3000
Reactivity:	Human, Mouse, Rat
Host:	Rabbit
Isotype:	IgG
Clonality:	Polyclonal
Immunogen:	The immunogen for anti-TGFR2 Antibody: A synthesized peptide derived from human TGFR2
Formulation:	Rabbit IgG in phosphate buffered saline , pH 7.4, 150mM NaCl, 0.02% sodium azide and 50% glycerol. Store at -20?. Stable for 12 months from date of receipt
Concentration:	lot specific
Purification:	Affinity-chromatography
Conjugation:	Unconjugated
Storage:	Store at -20°C as received.
Stability:	Stable for 12 months from date of receipt.
Predicted Protein Size:	65 kDa
Gene Name:	transforming growth factor beta receptor 2
Database Link:	<a href="#">NP_003233</a> <a href="#">Entrez Gene 21813 Mouse</a> <a href="#">Entrez Gene 81810 Rat</a> <a href="#">Entrez Gene 7048 Human</a> <a href="#">P37173</a>
Background:	TGFB2 a TKL kinase of the serine/threonine-protein kinase receptor (STKR) family. R1 and R2 TGF-beta receptors dimerize after binding TGF-beta at the cell surface. Binds to DAXX. Defects can cause esophageal cancer.
Synonyms:	AAT3; FAA3; LDS1B; LDS2; LDS2B; MFS2; RIIC; TAAD2; TGFbeta-RII; TGFR-2
Note:	TGFR2 antibody detects endogenous levels of total TGFR2
Protein Families:	Druggable Genome, Protein Kinase, Transmembrane



[View online »](#)

**Protein Pathways:**

Adherens junction, Chronic myeloid leukemia, Colorectal cancer, Cytokine-cytokine receptor interaction, Endocytosis, MAPK signaling pathway, Pancreatic cancer, Pathways in cancer, TGF-beta signaling pathway

**Product images:**

Western blot analysis on NIH-3T3 cell lysate using TGFR2 Antibody