

Product datasheet for **TA347474**

Stefin B (CSTB) Rabbit Polyclonal Antibody

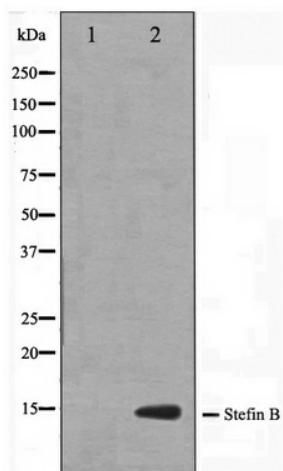
Product data:

Product Type:	Primary Antibodies
Applications:	WB
Recommended Dilution:	WB: 1:500-1:3000
Reactivity:	Human, Rat
Host:	Rabbit
Isotype:	IgG
Clonality:	Polyclonal
Immunogen:	The immunogen for anti-CSTB Antibody: A synthesized peptide derived from human CSTB
Formulation:	Rabbit IgG in phosphate buffered saline , pH 7.4, 150mM NaCl, 0.02% sodium azide and 50% glycerol. Store at -20?. Stable for 12 months from date of receipt
Concentration:	lot specific
Purification:	Affinity-chromatography
Conjugation:	Unconjugated
Storage:	Store at -20°C as received.
Stability:	Stable for 12 months from date of receipt.
Predicted Protein Size:	11 kDa
Gene Name:	cystatin B
Database Link:	NP_000091 Entrez Gene 25308 Rat Entrez Gene 1476 Human P04080
Background:	CSTB This is an intracellular thiol proteinase inhibitor. Tightly binding reversible inhibitor of cathepsins L, H and B. Belongs to the cystatin family. Able to form dimers stabilized by noncovalent forces.
Synonyms:	CPI-B; CST6; EPM1; EPM1A; PME; STFB; ULD
Note:	CSTB antibody detects endogenous levels of total CSTB



[View online »](#)

Product images:



Western blot analysis on A549 cell lysate using CSTB Antibody