

Product datasheet for **TA347473**

SCN1A Rabbit Polyclonal Antibody

Product data:

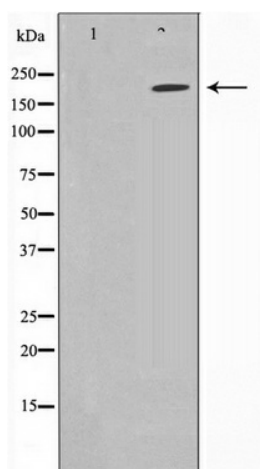
Product Type:	Primary Antibodies
Applications:	WB
Recommended Dilution:	WB: 1:500-1:3000
Reactivity:	Human, Mouse, Rat
Host:	Rabbit
Isotype:	IgG
Clonality:	Polyclonal
Immunogen:	The immunogen for anti-Sodium Channel-pan Antibody: A synthesized peptide derived from human Sodium Channel-pan
Formulation:	Rabbit IgG in phosphate buffered saline , pH 7.4, 150mM NaCl, 0.02% sodium azide and 50% glycerol. Store at -20?. Stable for 12 months from date of receipt
Concentration:	lot specific
Purification:	Affinity-chromatography
Conjugation:	Unconjugated
Storage:	Store at -20°C as received.
Stability:	Stable for 12 months from date of receipt.
Predicted Protein Size:	230 kDa
Gene Name:	sodium voltage-gated channel alpha subunit 1
Database Link:	NP_001159435 Entrez Gene 20265 Mouse Entrez Gene 81574 Rat Entrez Gene 6323 Human P35498
Background:	SCN5A This protein mediates the voltage-dependent sodium ion permeability of excitable membranes. Assuming opened or closed conformations in response to the voltage difference across the membrane, the protein forms a sodium-selective channel through which Na(+) ions may pass in accordance with their electrochemical gradient. It is a tetrodotoxin-resistant Na(+) channel isoform.
Synonyms:	EIEE6; FEB3; FEB3A; FHM3; GEFSP2; HBSCI; NAC1; Nav1.1; SCN1; SMEI



[View online »](#)

Note: Sodium Channel-pan antibody detects endogenous levels of total Sodium Channel-pan
Protein Families: Druggable Genome, Transmembrane

Product images:



Western blot analysis on HuvEc cell lysate using Sodium Channel-pan Antibody