

Product datasheet for **TA347472**

SNAP25 Rabbit Polyclonal Antibody

Product data:

Product Type:	Primary Antibodies
Applications:	WB
Recommended Dilution:	WB: 1:500-1:3000
Reactivity:	Human, Mouse, Rat
Host:	Rabbit
Isotype:	IgG
Clonality:	Polyclonal
Immunogen:	The immunogen for anti-SNAP25 Antibody: A synthesized peptide derived from human SNAP25
Formulation:	Rabbit IgG in phosphate buffered saline , pH 7.4, 150mM NaCl, 0.02% sodium azide and 50% glycerol. Store at -20?. Stable for 12 months from date of receipt
Concentration:	lot specific
Purification:	Affinity-chromatography
Conjugation:	Unconjugated
Storage:	Store at -20°C as received.
Stability:	Stable for 12 months from date of receipt.
Predicted Protein Size:	25 kDa
Gene Name:	synaptosome associated protein 25kDa
Database Link:	NP_570824 Entrez Gene 20614 Mouse Entrez Gene 25012 Rat Entrez Gene 6616 Human P60880
Background:	SNAP-25 a presynaptic plasma membrane protein involved in the regulation of neurotransmitter release. May play an important role in the synaptic function of specific neuronal systems. Part of the SNARE core complex containing SNAP25, VAMP2 and syntaxin 1A. Associates with proteins involved in vesicle docking and membrane fusion. Two alternatively spliced isoforms have been described.
Synonyms:	bA416N4.2; dJ1068F16.2; RIC-4; RIC4; SEC9; SNAP; SNAP-25



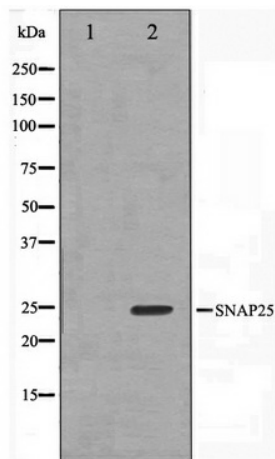
[View online »](#)

Note: SNAP25 antibody detects endogenous levels of total SNAP25

Protein Families: Druggable Genome

Protein Pathways: SNARE interactions in vesicular transport

Product images:



Western blot analysis on RAW264.7 cell lysate using SNAP25 Antibody