

Product datasheet for **TA347471**

SIRP alpha (SIRPA) Rabbit Polyclonal Antibody

Product data:

Product Type:	Primary Antibodies
Applications:	WB
Recommended Dilution:	WB: 1:500-1:3000
Reactivity:	Human, Mouse, Rat
Host:	Rabbit
Isotype:	IgG
Clonality:	Polyclonal
Immunogen:	The immunogen for anti-SHPS1 Antibody: A synthesized peptide derived from human SHPS1
Formulation:	Rabbit IgG in phosphate buffered saline , pH 7.4, 150mM NaCl, 0.02% sodium azide and 50% glycerol. Store at -20?. Stable for 12 months from date of receipt
Concentration:	lot specific
Purification:	Affinity-chromatography
Conjugation:	Unconjugated
Storage:	Store at -20°C as received.
Stability:	Stable for 12 months from date of receipt.
Predicted Protein Size:	55 kDa
Gene Name:	signal regulatory protein alpha
Database Link:	NP_542970 Entrez Gene 19261 MouseEntrez Gene 25528 RatEntrez Gene 140885 Human P78324
Background:	SHPS1 Immunoglobulin-like cell surface receptor for CD47. Acts as docking protein and induces translocation of PTPN6, PTPN11 and other binding partners from the cytosol to the plasma membrane. Supports adhesion of cerebellar neurons, neurite outgrowth and glial cell attachment. May play a key role in intracellular signaling during synaptogenesis and in synaptic function. Involved in the negative regulation of receptor tyrosine kinase-coupled cellular responses induced by cell adhesion, growth factors or insulin. Mediates negative regulation of phagocytosis, mast cell activation and dendritic cell activation.
Synonyms:	BIT; CD172A; MFR; MYD-1; P84; PTPNS1; SHPS1; SIRP

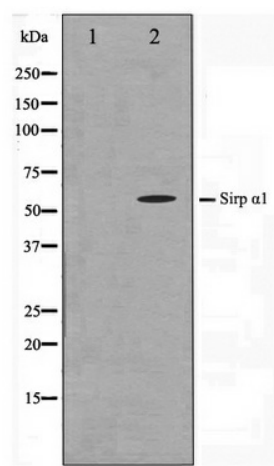


[View online »](#)

Note: SHPS1 antibody detects endogenous levels of total SHPS1

Protein Families: Druggable Genome, Phosphatase, Transmembrane

Product images:



Western blot analysis on HepG2 cell lysate using SHPS1 Antibody