

Product datasheet for **TA347470**

SHIP (INPP5D) Rabbit Polyclonal Antibody

Product data:

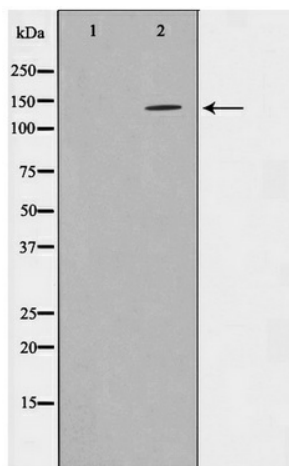
Product Type:	Primary Antibodies
Applications:	WB
Recommended Dilution:	WB: 1:500-1:3000
Reactivity:	Human, Mouse, Rat
Host:	Rabbit
Isotype:	IgG
Clonality:	Polyclonal
Immunogen:	The immunogen for anti-SHIP1 Antibody: A synthesized peptide derived from human SHIP1
Formulation:	Rabbit IgG in phosphate buffered saline , pH 7.4, 150mM NaCl, 0.02% sodium azide and 50% glycerol. Store at -20?. Stable for 12 months from date of receipt
Concentration:	lot specific
Purification:	Affinity-chromatography
Conjugation:	Unconjugated
Storage:	Store at -20°C as received.
Stability:	Stable for 12 months from date of receipt.
Predicted Protein Size:	133 kDa
Gene Name:	inositol polyphosphate-5-phosphatase D
Database Link:	NP_005532 Entrez Gene 16331 MouseEntrez Gene 54259 RatEntrez Gene 3635 Human Q92835
Background:	SHIP an SH2-containing inositol phosphatase. A hemopoietic-specific phosphatase that regulates cell survival, growth, cell cycle arrest and apoptosis. Hydrolyzes Ins(1,3,4,5)P4 and PtdIns(3,4,5)P3. A cytosolic protein with a SH2 domain in its N-terminus and two NPXY Shc binding motifs at its C-terminus.
Synonyms:	hp51CN; p150Ship; SHIP; SHIP-1; SHIP1; SIP-145
Note:	SHIP1 antibody detects endogenous levels of total SHIP1
Protein Families:	Druggable Genome



[View online »](#)

Protein Pathways:

B cell receptor signaling pathway, Fc epsilon RI signaling pathway, Fc gamma R-mediated phagocytosis, Insulin signaling pathway, Phosphatidylinositol signaling system

Product images:

Western blot analysis on HepG2 cell lysate using SHIP1 Antibody