

Product datasheet for **TA347468**

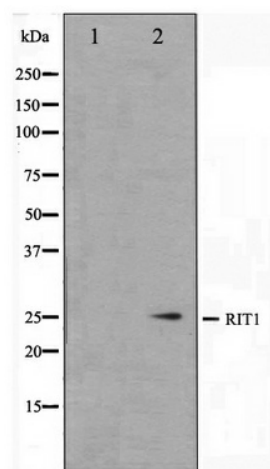
RIT1 Rabbit Polyclonal Antibody

Product data:

Product Type:	Primary Antibodies
Applications:	WB
Recommended Dilution:	WB: 1:500-1:3000
Reactivity:	Human, Mouse
Host:	Rabbit
Isotype:	IgG
Clonality:	Polyclonal
Immunogen:	The immunogen for anti-RIT1 Antibody: A synthesized peptide derived from human RIT1
Formulation:	Rabbit IgG in phosphate buffered saline , pH 7.4, 150mM NaCl, 0.02% sodium azide and 50% glycerol. Store at -20?. Stable for 12 months from date of receipt
Concentration:	lot specific
Purification:	Affinity-chromatography
Conjugation:	Unconjugated
Storage:	Store at -20°C as received.
Stability:	Stable for 12 months from date of receipt.
Predicted Protein Size:	25 kDa
Gene Name:	Ras like without CAAX 1
Database Link:	NP_008843 Entrez Gene 19769 Mouse Entrez Gene 6016 Human Q92963
Background:	RIT1 Plays a crucial role in coupling NGF stimulation to the activation of both EPHB2 and MAPK14 signaling pathways and in NGF- dependent neuronal differentiation. Belongs to the small GTPase superfamily. Ras family. Interacts with MLLT4, the C-terminal domain of RALGDS and RLF, but not with RIN1 and PIK3CA. RLF binds exclusively to the active GTP-bound form.
Synonyms:	NS8; RIBB; RIT; ROC1
Note:	RIT1 antibody detects endogenous levels of total RIT1



[View online »](#)

Product images:


Western blot analysis on Jurkat cell lysate using RIT1 Antibody