

Product datasheet for **TA347466**

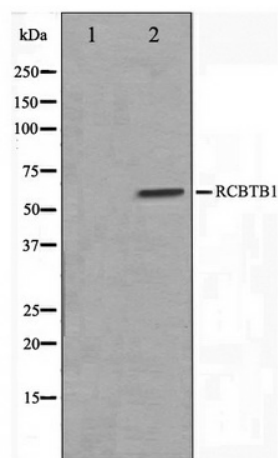
CLLD7 (RCBTB1) Rabbit Polyclonal Antibody

Product data:

Product Type:	Primary Antibodies
Applications:	WB
Recommended Dilution:	WB: 1:500-1:3000
Reactivity:	Human, Mouse
Host:	Rabbit
Isotype:	IgG
Clonality:	Polyclonal
Immunogen:	The immunogen for anti-RCBTB1 Antibody: A synthesized peptide derived from human RCBTB1
Formulation:	Rabbit IgG in phosphate buffered saline , pH 7.4, 150mM NaCl, 0.02% sodium azide and 50% glycerol. Store at -20?. Stable for 12 months from date of receipt
Concentration:	lot specific
Purification:	Affinity-chromatography
Conjugation:	Unconjugated
Storage:	Store at -20°C as received.
Stability:	Stable for 12 months from date of receipt.
Predicted Protein Size:	58 kDa
Gene Name:	RCC1 and BTB domain containing protein 1
Database Link:	NP_060661 Entrez Gene 71330 Mouse Entrez Gene 55213 Human Q8NDN9
Background:	RCBTB1 May be involved in cell cycle regulation by chromatin remodeling. 2 isoforms of the human protein are produced by alternative splicing.
Synonyms:	CLLD7; CLLL7; GLP
Note:	RCBTB1 antibody detects endogenous levels of total RCBTB1



[View online »](#)

Product images:


Western blot analysis on LOVO cell lysate using RCBTB1 Antibody