

## Product datasheet for **TA347465**

### NRAS Rabbit Polyclonal Antibody

#### Product data:

Product Type:	Primary Antibodies
Applications:	WB
Recommended Dilution:	WB: 1:500-1:3000
Reactivity:	Human, Mouse, Rat
Host:	Rabbit
Isotype:	IgG
Clonality:	Polyclonal
Immunogen:	The immunogen for anti-RASH/RASK/RASN Antibody: A synthesized peptide derived from human RASH/RASK/RASN
Formulation:	Rabbit IgG in phosphate buffered saline , pH 7.4, 150mM NaCl, 0.02% sodium azide and 50% glycerol. Store at -20?. Stable for 12 months from date of receipt
Concentration:	lot specific
Purification:	Affinity-chromatography
Conjugation:	Unconjugated
Storage:	Store at -20°C as received.
Stability:	Stable for 12 months from date of receipt.
Predicted Protein Size:	25 kDa,21 kDa
Gene Name:	neuroblastoma RAS viral oncogene homolog
Database Link:	<a href="#">NP_002515</a> <a href="#">Entrez Gene 18176 Mouse</a> <a href="#">Entrez Gene 24605 Rat</a> <a href="#">Entrez Gene 4893 Human</a> <a href="#">P01111</a>
Background:	HRas a small GTPase protein of the Ras family. Alternates between an inactive form bound to GDP and an active form bound to GTP. Activated by a guanine nucleotide-exchange factor (GEF) and inactivated by a GTPase-activating protein (GAP). Mutations are implicated in a variety of human tumors.
Synonyms:	ALPS4; CMNS; N-ras; NCMS; NRAS1; NS6
Note:	RASH/RASK/RASN antibody detects endogenous levels of total RASH/RASK/RASN

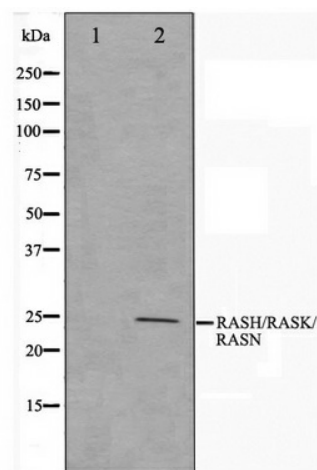


[View online »](#)

**Protein Families:** Druggable Genome

**Protein Pathways:** Acute myeloid leukemia, Axon guidance, B cell receptor signaling pathway, Bladder cancer, Chemokine signaling pathway, Chronic myeloid leukemia, Endometrial cancer, ErbB signaling pathway, Fc epsilon RI signaling pathway, Gap junction, Glioma, GnRH signaling pathway, Insulin signaling pathway, Long-term depression, Long-term potentiation, MAPK signaling pathway, Melanogenesis, Melanoma, Natural killer cell mediated cytotoxicity, Neurotrophin signaling pathway, Non-small cell lung cancer, Pathways in cancer, Prostate cancer, Regulation of actin cytoskeleton, Renal cell carcinoma, T cell receptor signaling pathway, Thyroid cancer, Tight junction, VEGF signaling pathway

### Product images:



Western blot analysis on HeLa cell lysate using RASH/RASK/RASN Antibody