

Product datasheet for **TA347464**

Prostate Specific Antigen (KLK3) Rabbit Polyclonal Antibody

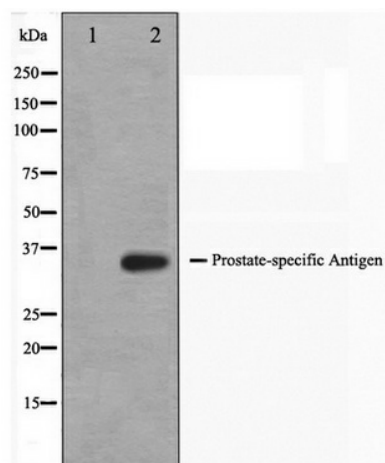
Product data:

Product Type:	Primary Antibodies
Applications:	WB
Recommended Dilution:	WB: 1:500-1:3000
Reactivity:	Human
Host:	Rabbit
Isotype:	IgG
Clonality:	Polyclonal
Immunogen:	The immunogen for anti-KLK3 Antibody: A synthesized peptide derived from human KLK3
Formulation:	Rabbit IgG in phosphate buffered saline , pH 7.4, 150mM NaCl, 0.02% sodium azide and 50% glycerol. Store at -20?. Stable for 12 months from date of receipt
Concentration:	lot specific
Purification:	Affinity-chromatography
Conjugation:	Unconjugated
Storage:	Store at -20°C as received.
Stability:	Stable for 12 months from date of receipt.
Predicted Protein Size:	34 kDa
Gene Name:	kallikrein related peptidase 3
Database Link:	NP_001639 Entrez Gene 354 Human P07288
Background:	KLK3 Hydrolyzes semenogelin-1 thus leading to the liquefaction of the seminal coagulum. Belongs to the peptidase S1 family. Kallikrein subfamily.
Synonyms:	APS; hK3; KLK2A1; PSA
Note:	KLK3 antibody detects endogenous levels of total KLK3
Protein Families:	Druggable Genome, Protease, Secreted Protein
Protein Pathways:	Pathways in cancer, Prostate cancer



[View online »](#)

Product images:



Western blot analysis on mouse heart cell lysate using KLK3 Antibody