

## Product datasheet for **TA347463**

### Presenilin 1 (PSEN1) Rabbit Polyclonal Antibody

#### Product data:

Product Type:	Primary Antibodies
Applications:	WB
Recommended Dilution:	WB: 1:500-1:3000
Reactivity:	Human
Host:	Rabbit
Isotype:	IgG
Clonality:	Polyclonal
Immunogen:	The immunogen for anti-Presenilin 1 Antibody: A synthesized peptide derived from human Presenilin 1
Formulation:	Rabbit IgG in phosphate buffered saline , pH 7.4, 150mM NaCl, 0.02% sodium azide and 50% glycerol. Store at -20?. Stable for 12 months from date of receipt
Concentration:	lot specific
Purification:	Affinity-chromatography
Conjugation:	Unconjugated
Storage:	Store at -20°C as received.
Stability:	Stable for 12 months from date of receipt.
Predicted Protein Size:	60 kDa
Gene Name:	presenilin 1
Database Link:	<a href="#">NP_000012</a> <a href="#">Entrez Gene 5663 Human</a> <a href="#">P49768</a>
Background:	PSEN1 probable catalytic subunit of the gamma-secretase complex, an endoprotease complex that catalyzes the intramembrane cleavage of integral membrane proteins such as Notch receptors and APP (beta-amyloid precursor protein). Requires the other members of the gamma-secretase complex to have a protease activity. May play a role in intracellular signaling and gene expression or in linking chromatin to the nuclear membrane. Regulates epithelial- cadherin function.
Synonyms:	AD3; FAD; PS-1; PS1; S182

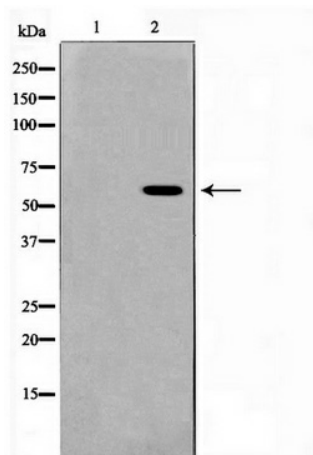


[View online »](#)

**Note:** Presenilin 1 antibody detects endogenous levels of total Presenilin 1

**Protein Families:** Druggable Genome, Protease, Transmembrane

**Protein Pathways:** Alzheimer's disease, Neurotrophin signaling pathway, Notch signaling pathway, Wnt signaling pathway

**Product images:**

Western blot analysis on RAW264.7 cell lysate using Presenilin 1 Antibody