

Product datasheet for **TA347462**

Kv3.2 (KCNC2) Rabbit Polyclonal Antibody

Product data:

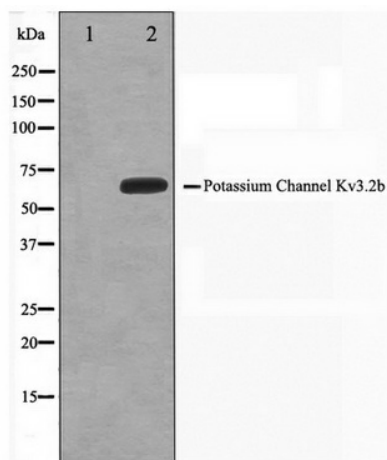
Product Type:	Primary Antibodies
Applications:	WB
Recommended Dilution:	WB: 1:500-1:3000
Reactivity:	Human, Mouse, Rat
Host:	Rabbit
Isotype:	IgG
Clonality:	Polyclonal
Immunogen:	The immunogen for anti-KCNC2 Antibody: A synthesized peptide derived from human KCNC2
Formulation:	Rabbit IgG in phosphate buffered saline , pH 7.4, 150mM NaCl, 0.02% sodium azide and 50% glycerol. Store at -20?. Stable for 12 months from date of receipt
Concentration:	lot specific
Purification:	Affinity-chromatography
Conjugation:	Unconjugated
Storage:	Store at -20°C as received.
Stability:	Stable for 12 months from date of receipt.
Predicted Protein Size:	70 kDa
Gene Name:	potassium voltage-gated channel subfamily C member 2
Database Link:	NP_715624 Entrez Gene 246153 RatEntrez Gene 268345 MouseEntrez Gene 3747 Human Q96PR1
Background:	KCNC2 Mediates the voltage-dependent potassium ion permeability of excitable membranes. Assuming opened or closed conformations in response to the voltage difference across the membrane, the protein forms a potassium-selective channel through which potassium ions may pass in accordance with their electrochemical gradient. Channel properties are modulated by subunit assembly.
Synonyms:	KV3.2
Note:	KCNC2 antibody detects endogenous levels of total KCNC2



[View online »](#)

Protein Families: Druggable Genome, Ion Channels: Potassium, Transmembrane

Product images:



Western blot analysis on HepG2 cell lysate using KCNC2 Antibody