

## Product datasheet for **TA347461**

### PGP9.5 (UCHL1) Rabbit Polyclonal Antibody

#### Product data:

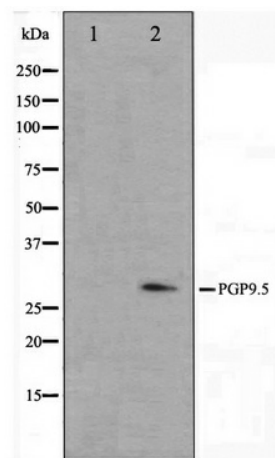
Product Type:	Primary Antibodies
Applications:	WB
Recommended Dilution:	WB: 1:500-1:3000
Reactivity:	Human, Mouse, Rat
Host:	Rabbit
Isotype:	IgG
Clonality:	Polyclonal
Immunogen:	The immunogen for anti-PGP9.5 Antibody: A synthesized peptide derived from human PGP9.5
Formulation:	Rabbit IgG in phosphate buffered saline , pH 7.4, 150mM NaCl, 0.02% sodium azide and 50% glycerol. Store at -20?. Stable for 12 months from date of receipt
Concentration:	lot specific
Purification:	Affinity-chromatography
Conjugation:	Unconjugated
Storage:	Store at -20°C as received.
Stability:	Stable for 12 months from date of receipt.
Predicted Protein Size:	28 kDa
Gene Name:	ubiquitin C-terminal hydrolase L1
Database Link:	<a href="#">NP_004172</a> <a href="#">Entrez Gene 22223 Mouse</a> <a href="#">Entrez Gene 29545 Rat</a> <a href="#">Entrez Gene 7345 Human</a> <a href="#">P09936</a>
Background:	UCHL1 Ubiquitin-protein hydrolase involved both in the processing of ubiquitin precursors and of ubiquitinated proteins. This enzyme is a thiol protease that recognizes and hydrolyzes a peptide bond at the C-terminal glycine of ubiquitin.
Synonyms:	HEL-117; NDGOA; PARK5; PGP 9.5; PGP9.5; PGP95; Uch-L1
Note:	PGP9.5 antibody detects endogenous levels of total PGP9.5
Protein Families:	Druggable Genome, Protease



[View online »](#)

Protein Pathways: Parkinson's disease

### Product images:



Western blot analysis on 293 cell lysate using PGP9.5 Antibody