

## Product datasheet for **TA347460**

### Peripherin (PRPH) Rabbit Polyclonal Antibody

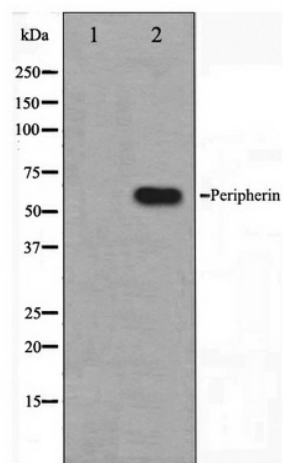
#### Product data:

Product Type:	Primary Antibodies
Applications:	WB
Recommended Dilution:	WB: 1:500-1:3000
Reactivity:	Human, Rat
Host:	Rabbit
Isotype:	IgG
Clonality:	Polyclonal
Immunogen:	The immunogen for anti-Peripherin Antibody: A synthesized peptide derived from human Peripherin
Formulation:	Rabbit IgG in phosphate buffered saline , pH 7.4, 150mM NaCl, 0.02% sodium azide and 50% glycerol. Store at -20?. Stable for 12 months from date of receipt
Concentration:	lot specific
Purification:	Affinity-chromatography
Conjugation:	Unconjugated
Storage:	Store at -20°C as received.
Stability:	Stable for 12 months from date of receipt.
Predicted Protein Size:	55 kDa
Gene Name:	peripherin
Database Link:	<a href="#">NP_006253</a> <a href="#">Entrez Gene 24688 Rat</a> <a href="#">Entrez Gene 5630 Human</a> <a href="#">P41219</a>
Background:	peripherin Class-III neuronal intermediate filament protein. Belongs to the intermediate filament family. 2 isoforms of the human protein are produced by alternative splicing.
Synonyms:	NEF4; PRPH1
Note:	Peripherin antibody detects endogenous levels of total Peripherin
Protein Pathways:	Amyotrophic lateral sclerosis (ALS)



[View online »](#)

## Product images:



Western blot analysis on HepG2 cell lysate using Peripherin Antibody