

## Product datasheet for TA347457

### PCNA Rabbit Polyclonal Antibody

#### Product data:

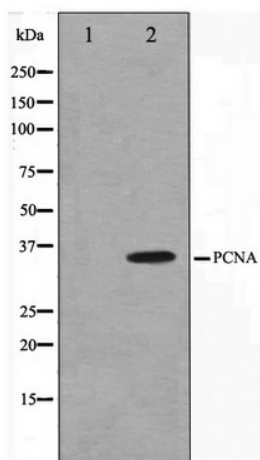
Product Type:	Primary Antibodies
Applications:	WB
Recommended Dilution:	WB: 1:500-1:3000
Reactivity:	Human, Mouse, Rat
Host:	Rabbit
Isotype:	IgG
Clonality:	Polyclonal
Immunogen:	The immunogen for anti-PCNA Antibody: A synthesized peptide derived from human PCNA
Formulation:	Rabbit IgG in phosphate buffered saline , pH 7.4, 150mM NaCl, 0.02% sodium azide and 50% glycerol. Store at -20?. Stable for 12 months from date of receipt
Concentration:	lot specific
Purification:	Affinity-chromatography
Conjugation:	Unconjugated
Storage:	Store at -20°C as received.
Stability:	Stable for 12 months from date of receipt.
Predicted Protein Size:	36 kDa
Gene Name:	proliferating cell nuclear antigen
Database Link:	<a href="#">NP_002583</a> <a href="#">Entrez Gene 18538 MouseEntrez Gene 25737 RatEntrez Gene 5111 Human P12004</a>
Background:	PCNA This protein is an auxiliary protein of DNA polymerase delta and is involved in the control of eukaryotic DNA replication by increasing the polymerase's processibility during elongation of the leading strand. Belongs to the PCNA family. Homotrimer. Forms a complex with activator 1 heteropentamer in the presence of ATP.
Synonyms:	ATLD2
Note:	PCNA antibody detects endogenous levels of total PCNA
Protein Families:	Druggable Genome, Stem cell - Pluripotency



[View online »](#)

Protein Pathways: Base excision repair, Cell cycle, DNA replication, Mismatch repair, Nucleotide excision repair

### Product images:



Western blot analysis on HepG2 cell lysate using PCNA Antibody