

Product datasheet for **TA347456**

PAX5 Rabbit Polyclonal Antibody

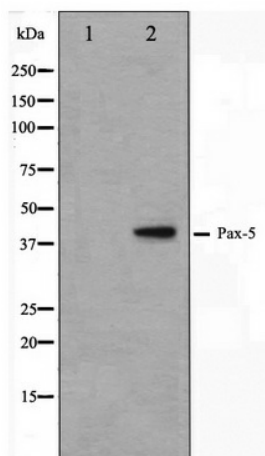
Product data:

Product Type:	Primary Antibodies
Applications:	WB
Recommended Dilution:	WB: 1:500-1:3000
Reactivity:	Human, Mouse
Host:	Rabbit
Isotype:	IgG
Clonality:	Polyclonal
Immunogen:	The immunogen for anti-Pax-5 Antibody: A synthesized peptide derived from human Pax-5
Formulation:	Rabbit IgG in phosphate buffered saline , pH 7.4, 150mM NaCl, 0.02% sodium azide and 50% glycerol. Store at -20?. Stable for 12 months from date of receipt
Concentration:	lot specific
Purification:	Affinity-chromatography
Conjugation:	Unconjugated
Storage:	Store at -20°C as received.
Stability:	Stable for 12 months from date of receipt.
Predicted Protein Size:	40 kDa
Gene Name:	paired box 5
Database Link:	NP_057953 Entrez Gene 18507 Mouse Entrez Gene 5079 Human Q02548
Background:	AX5 May play an important role in B-cell differentiation as well as neural development and spermatogenesis. Involved in the regulation of the CD19 gene, a B-lymphoid-specific target gene. Interacts with DAXX. Binds DNA as a monomer. Binds TLE4.
Synonyms:	ALL3; BSAP
Note:	Pax-5 antibody detects endogenous levels of total Pax-5
Protein Families:	Transcription Factors



[View online »](#)

Product images:



Western blot analysis on 293 cell lysate using Pax-5 Antibody