

Product datasheet for TA347455

PTCH1 Rabbit Polyclonal Antibody

Product data:

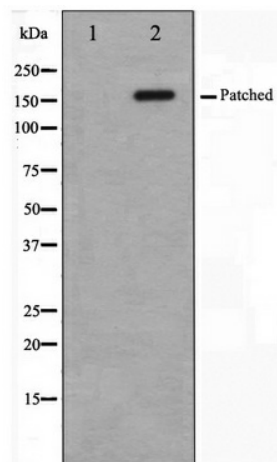
Product Type:	Primary Antibodies
Applications:	WB
Recommend Dilution:	WB: 1:500-1:3000
Reactivity:	Human, Mouse
Host:	Rabbit
Isotype:	IgG
Clonality:	Polyclonal
Immunogen:	The immunogen for anti-Patched Antibody: A synthesized peptide derived from human Patched
Formulation:	Rabbit IgG in phosphate buffered saline , pH 7.4, 150mM NaCl, 0.02% sodium azide and 50% glycerol. Store at -20?. Stable for 12 months from date of receipt
Concentration:	lot specific
Purification:	Affinity-chromatography
Storage:	Store at -20°C as received.
Stability:	Stable for 12 months from date of receipt.
Predicted Protein Size:	160 kDa
Gene Name:	patched 1
Database Link:	NP_000255 Entrez Gene 19206 Mouse Entrez Gene 5727 Human
Background:	PTCH1 a multi-pass membrane protein member of the patched family that acts as a receptor for sonic hedgehog (SHH), indian hedgehog (IHH) and desert hedgehog (DHH). Associates with the smoothened protein (SMO) to transduce the hedgehog proteins signal. Seems to have a tumor suppressor function, as inactivation of this protein is probably a necessary, if not sufficient step for tumorigenesis. Interacts with SNX17. Expressed in tumor cells but not in normal skin.
Synonyms:	BCNS; HPE7; NBCCS; PTC; PTC1; PTCH; PTCH11
Note:	Patched antibody detects endogenous levels of total Patched
Protein Families:	Druggable Genome, ES Cell Differentiation/IPS, Transmembrane



[View online »](#)

Protein Pathways: Basal cell carcinoma, Hedgehog signaling pathway, Pathways in cancer

Product images:



Western blot analysis on mouse muscle cell lysate using Patched Antibody