

Product datasheet for **TA347454**

CCNL1 Rabbit Polyclonal Antibody

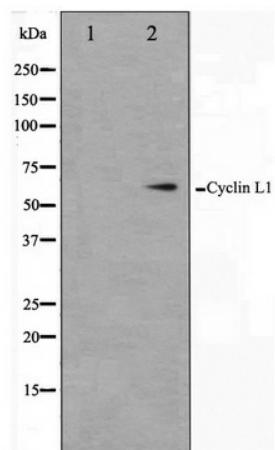
Product data:

Product Type:	Primary Antibodies
Applications:	WB
Recommended Dilution:	WB: 1:500-1:3000
Reactivity:	Human, Mouse, Rat
Host:	Rabbit
Isotype:	IgG
Clonality:	Polyclonal
Immunogen:	The immunogen for anti-Cyclin L1 Antibody: A synthesized peptide derived from human Cyclin L1
Formulation:	Rabbit IgG in phosphate buffered saline , pH 7.4, 150mM NaCl, 0.02% sodium azide and 50% glycerol. Store at -20?. Stable for 12 months from date of receipt
Concentration:	lot specific
Purification:	Affinity-chromatography
Conjugation:	Unconjugated
Storage:	Store at -20°C as received.
Stability:	Stable for 12 months from date of receipt.
Predicted Protein Size:	60 kDa
Gene Name:	cyclin L1
Database Link:	NP_064703 Entrez Gene 56706 Mouse Entrez Gene 114121 Rat Entrez Gene 57018 Human Q9UK58
Background:	CCNL1 cyclin L1, a member of the cyclin family. Associates with the PITSLRE kinase and is involved in pre-mRNA processing.
Synonyms:	ania-6a; ANIA6A; BM-001; PRO1073
Note:	Cyclin L1 antibody detects endogenous levels of total Cyclin L1
Protein Families:	Druggable Genome



[View online »](#)

Product images:



Western blot analysis on HepG2 cell lysate using Cyclin L1 Antibody