

## Product datasheet for **TA347453**

### Parkin (PARK2) Rabbit Polyclonal Antibody

#### Product data:

Product Type:	Primary Antibodies
Applications:	WB
Recommended Dilution:	WB: 1:500-1:3000
Reactivity:	Human, Mouse, Rat
Host:	Rabbit
Isotype:	IgG
Clonality:	Polyclonal
Immunogen:	The immunogen for anti-Parkin Antibody: A synthesized peptide derived from human Parkin
Formulation:	Rabbit IgG in phosphate buffered saline , pH 7.4, 150mM NaCl, 0.02% sodium azide and 50% glycerol. Store at -20?. Stable for 12 months from date of receipt
Concentration:	lot specific
Purification:	Affinity-chromatography
Conjugation:	Unconjugated
Storage:	Store at -20°C as received.
Stability:	Stable for 12 months from date of receipt.
Predicted Protein Size:	52 kDa
Gene Name:	parkin RBR E3 ubiquitin protein ligase
Database Link:	<a href="#">NP_054642</a> <a href="#">Entrez Gene 50873 Mouse</a> <a href="#">Entrez Gene 56816 Rat</a> <a href="#">Entrez Gene 5071 Human</a> <a href="#">O60260</a>
Background:	PARK2 Functions within a multiprotein E3 ubiquitin ligase complex, catalyzing the covalent attachment of ubiquitin moieties onto substrate proteins. These substrates include SYT11, CCNE1, GPR37, STUB1, a 22 kDa O-linked glycosylated isoform of SNCAIP, SEPT5 and AIMP2. May play a more general role in the ubiquitin proteasomal pathway by participating in the removal and/or detoxification of abnormally folded or damaged protein. Loss of this ubiquitin ligase activity appears to be the mechanism underlying pathogenesis of PARK2.
Synonyms:	AR-JP; LPRS2; PDJ; PRKN

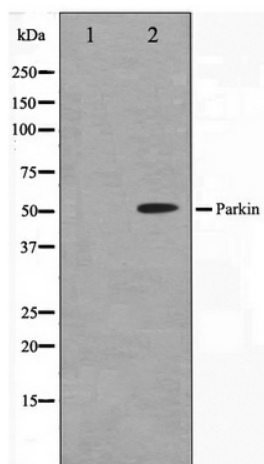


[View online »](#)

**Note:** Parkin antibody detects endogenous levels of total Parkin

**Protein Pathways:** Parkinson's disease, Ubiquitin mediated proteolysis

**Product images:**



Western blot analysis on HeLa cell lysate using Parkin Antibody