

Product datasheet for **TA347448**

p15 INK4b (CDKN2B) Rabbit Polyclonal Antibody

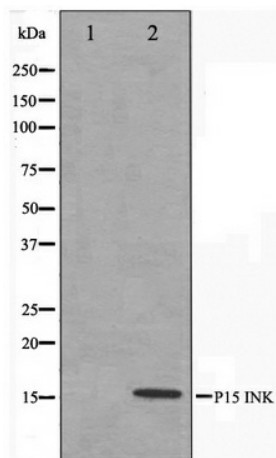
Product data:

Product Type:	Primary Antibodies
Applications:	WB
Recommended Dilution:	WB: 1:500-1:3000
Reactivity:	Human, Mouse, Rat
Host:	Rabbit
Isotype:	IgG
Clonality:	Polyclonal
Immunogen:	The immunogen for anti-p15 INK Antibody: A synthesized peptide derived from human p15 INK
Formulation:	Rabbit IgG in phosphate buffered saline , pH 7.4, 150mM NaCl, 0.02% sodium azide and 50% glycerol. Store at -20?. Stable for 12 months from date of receipt
Concentration:	lot specific
Purification:	Affinity-chromatography
Conjugation:	Unconjugated
Storage:	Store at -20°C as received.
Stability:	Stable for 12 months from date of receipt.
Predicted Protein Size:	14 kDa
Gene Name:	cyclin-dependent kinase inhibitor 2B
Database Link:	NP_511042 Entrez Gene 12579 Mouse Entrez Gene 25164 Rat Entrez Gene 1030 Human P42772
Background:	p15-INK4B a potent inhibitor that nteracts strongly with CDK4 and CDK6. Potential effector of TGF-beta induced cell cycle arres
Synonyms:	CDK4I; INK4B; MTS2; P15; p15INK4b; TP15
Note:	p15 INK antibody detects endogenous levels of total p15 INK
Protein Families:	Druggable Genome
Protein Pathways:	Cell cycle, Pathways in cancer, Small cell lung cancer, TGF-beta signaling pathway



[View online »](#)

Product images:



Western blot analysis on HeLa cell lysate using p15 INK Antibody