

Product datasheet for **TA347445**

Osteopontin (SPP1) Rabbit Polyclonal Antibody

Product data:

Product Type:	Primary Antibodies
Applications:	WB
Recommended Dilution:	WB: 1:500-1:3000
Reactivity:	Human, Mouse, Rat
Host:	Rabbit
Isotype:	IgG
Clonality:	Polyclonal
Immunogen:	The immunogen for anti-Osteopontin Antibody: A synthesized peptide derived from human Osteopontin
Formulation:	Rabbit IgG in phosphate buffered saline , pH 7.4, 150mM NaCl, 0.02% sodium azide and 50% glycerol. Store at -20?. Stable for 12 months from date of receipt
Concentration:	lot specific
Purification:	Affinity-chromatography
Conjugation:	Unconjugated
Storage:	Store at -20°C as received.
Stability:	Stable for 12 months from date of receipt.
Predicted Protein Size:	60 kDa
Gene Name:	secreted phosphoprotein 1
Database Link:	NP_001035149 Entrez Gene 20750 Mouse Entrez Gene 25353 Rat Entrez Gene 6696 Human P10451
Background:	osteopontin Binds tightly to hydroxyapatite. Appears to form an integral part of the mineralized matrix. Probably important to cell-matrix interaction. Belongs to the osteopontin family. Ligand for integrin alpha-V/beta-3. 4 isoforms of the human protein are produced by alternative splicing.
Synonyms:	BNSP; BSPI; ETA-1; OPN
Note:	Osteopontin antibody detects endogenous levels of total Osteopontin

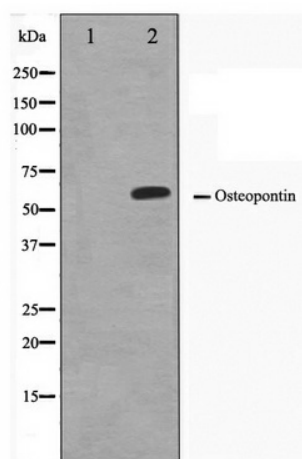


[View online »](#)

Protein Families: Druggable Genome, Secreted Protein

Protein Pathways: ECM-receptor interaction, Focal adhesion, Toll-like receptor signaling pathway

Product images:



Western blot analysis on LOVO cell lysate using Osteopontin Antibody