

## Product datasheet for **TA347441**

### NSE (ENO2) Rabbit Polyclonal Antibody

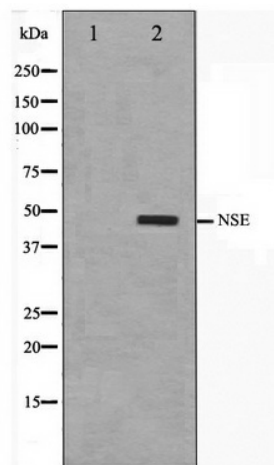
#### Product data:

|                         |   |
|-------------------------|---|
| Product Type:           | Primary Antibodies  |
| Applications:           | WB  |
| Recommended Dilution:   | WB: 1:500-1:3000  |
| Reactivity:             | Human, Mouse, Rat   |
| Host:                   | Rabbit  |
| Isotype:                | IgG   |
| Clonality:              | Polyclonal  |
| Immunogen:              | The immunogen for anti-NSE Antibody: A synthesized peptide derived from human NSE   |
| Formulation:            | Rabbit IgG in phosphate buffered saline , pH 7.4, 150mM NaCl, 0.02% sodium azide and 50% glycerol. Store at -20?. Stable for 12 months from date of receipt   |
| Concentration:          | lot specific  |
| Purification:           | Affinity-chromatography   |
| Conjugation:            | Unconjugated  |
| Storage:                | Store at -20°C as received.   |
| Stability:              | Stable for 12 months from date of receipt.  |
| Predicted Protein Size: | 47 kDa  |
| Gene Name:              | enolase 2   |
| Database Link:          | <a href="#">NP_001966</a><br><a href="#">Entrez Gene 13807 MouseEntrez Gene 24334 RatEntrez Gene 2026 Human P09104</a>  |
| Background:             | ENO2 an enzyme with 2-phospho-D-glycerate hydro-lyase activity. One of the three enolase isoenzymes found in mammals. This isoenzyme, a homodimer, is found in mature neurons and cells of neuronal origin. A switch from alpha enolase to gamma enolase occurs in neural tissue during development in rats and primates. |
| Synonyms:               | HEL-S-279; NSE  |
| Note:                   | NSE antibody detects endogenous levels of total NSE   |
| Protein Pathways:       | Glycolysis / Gluconeogenesis, Metabolic pathways, RNA degradation   |



[View online »](#)

## Product images:



Western blot analysis on HepG2 cell lysate using NSE Antibody