

Product datasheet for **TA347440**

NME2 Rabbit Polyclonal Antibody

Product data:

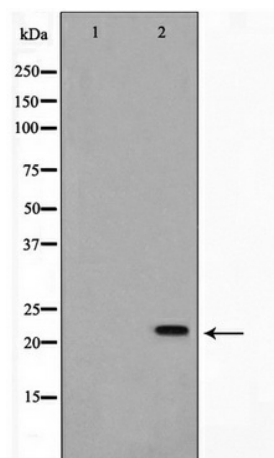
Product Type:	Primary Antibodies
Applications:	WB
Recommended Dilution:	WB: 1:500-1:3000
Reactivity:	Human, Mouse, Rat
Host:	Rabbit
Isotype:	IgG
Clonality:	Polyclonal
Immunogen:	The immunogen for anti-NM23 Antibody: A synthesized peptide derived from human NM23
Formulation:	Rabbit IgG in phosphate buffered saline , pH 7.4, 150mM NaCl, 0.02% sodium azide and 50% glycerol. Store at -20?. Stable for 12 months from date of receipt
Concentration:	lot specific
Purification:	Affinity-chromatography
Conjugation:	Unconjugated
Storage:	Store at -20°C as received.
Stability:	Stable for 12 months from date of receipt.
Predicted Protein Size:	23 kDa
Gene Name:	NME/NM23 nucleoside diphosphate kinase 2
Database Link:	NP_002503 Entrez Gene 18103 MouseEntrez Gene 83782 RatEntrez Gene 4831 Human P22392
Background:	NM23 nucleoside diphosphate kinase A. Major role in the synthesis of nucleoside triphosphates other than ATP. Holoenzyme is a hexamer of the A and B subunits. Mutations have been identified in aggressive neuroblastomas. Two transcript variants encoding different isoforms have been described.
Synonyms:	NDKB; NDPK-B; NDPKB; NM23-H2; NM23B; PUF
Note:	NM23 antibody detects endogenous levels of total NM23
Protein Families:	Druggable Genome, Transcription Factors



[View online »](#)

Protein Pathways: Metabolic pathways, Purine metabolism, Pyrimidine metabolism

Product images:



Western blot analysis on K562 cell lysate using NM23 Antibody