

Product datasheet for **TA347438**

MMP8 Rabbit Polyclonal Antibody

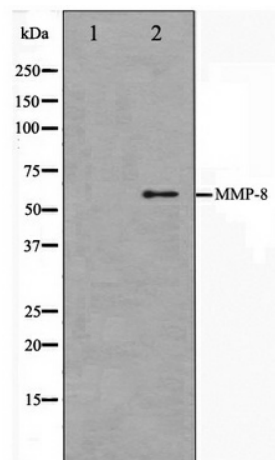
Product data:

Product Type:	Primary Antibodies
Applications:	WB
Recommended Dilution:	WB: 1:500-1:3000
Reactivity:	Human, Mouse, Rat
Host:	Rabbit
Isotype:	IgG
Clonality:	Polyclonal
Immunogen:	The immunogen for anti-MMP8 Antibody: A synthesized peptide derived from human MMP8
Formulation:	Rabbit IgG in phosphate buffered saline , pH 7.4, 150mM NaCl, 0.02% sodium azide and 50% glycerol. Store at -20?. Stable for 12 months from date of receipt
Concentration:	lot specific
Purification:	Affinity-chromatography
Conjugation:	Unconjugated
Storage:	Store at -20°C as received.
Stability:	Stable for 12 months from date of receipt.
Predicted Protein Size:	55 kDa
Gene Name:	matrix metalloproteinase 8
Database Link:	NP_002415 Entrez Gene 17394 Mouse Entrez Gene 63849 Rat Entrez Gene 4317 Human P22894
Background:	MMP8 Can degrade fibrillar type I, II, and III collagens. Belongs to the peptidase M10A family.
Synonyms:	CLG1; HNC; MMP-8; PMNL-CL
Note:	MMP8 antibody detects endogenous levels of total MMP8
Protein Families:	Druggable Genome, Protease



[View online »](#)

Product images:



Western blot analysis on NIH-3T3 cell lysate using MMP8 Antibody