

Product datasheet for **TA347437**

MMP7 Rabbit Polyclonal Antibody

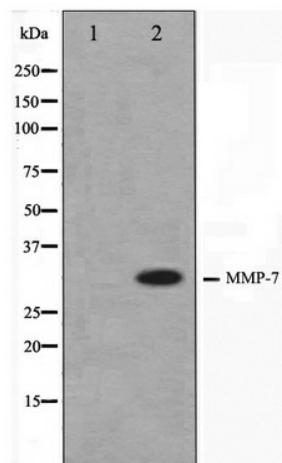
Product data:

Product Type:	Primary Antibodies
Applications:	WB
Recommended Dilution:	WB: 1:500-1:3000
Reactivity:	Human, Mouse, Rat
Host:	Rabbit
Isotype:	IgG
Clonality:	Polyclonal
Immunogen:	The immunogen for anti-MMP7 Antibody: A synthesized peptide derived from human MMP7
Formulation:	Rabbit IgG in phosphate buffered saline , pH 7.4, 150mM NaCl, 0.02% sodium azide and 50% glycerol. Store at -20?. Stable for 12 months from date of receipt
Concentration:	lot specific
Purification:	Affinity-chromatography
Conjugation:	Unconjugated
Storage:	Store at -20°C as received.
Stability:	Stable for 12 months from date of receipt.
Predicted Protein Size:	29 kDa
Gene Name:	matrix metalloproteinase 7
Database Link:	NP_002414 Entrez Gene 17393 Mouse Entrez Gene 25335 Rat Entrez Gene 4316 Human P09237
Background:	MMP7 Degrades casein, gelatins of types I, III, IV, and V, and fibronectin. Activates procollagenase. Belongs to the peptidase M10A family. Note: This description may include information from UniProtKB.
Synonyms:	MMP-7; MPLS1; PUMP-1
Note:	MMP7 antibody detects endogenous levels of total MMP7
Protein Families:	Druggable Genome, Protease
Protein Pathways:	Wnt signaling pathway



[View online »](#)

Product images:



Western blot analysis on COS7 cell lysate using MMP7 Antibody