

Product datasheet for **TA347436**

MMP3 Rabbit Polyclonal Antibody

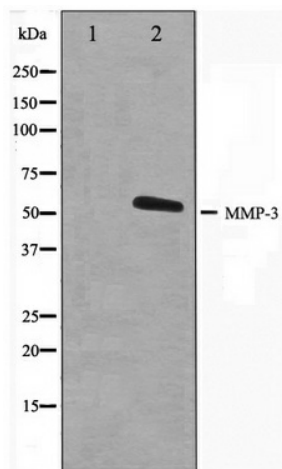
Product data:

Product Type:	Primary Antibodies
Applications:	WB
Recommended Dilution:	WB: 1:500-1:3000
Reactivity:	Human, Mouse, Rat
Host:	Rabbit
Isotype:	IgG
Clonality:	Polyclonal
Immunogen:	The immunogen for anti-MMP3 Antibody: A synthesized peptide derived from human MMP3
Formulation:	Rabbit IgG in phosphate buffered saline , pH 7.4, 150mM NaCl, 0.02% sodium azide and 50% glycerol. Store at -20?. Stable for 12 months from date of receipt
Concentration:	lot specific
Purification:	Affinity-chromatography
Conjugation:	Unconjugated
Storage:	Store at -20°C as received.
Stability:	Stable for 12 months from date of receipt.
Predicted Protein Size:	53 kDa
Gene Name:	matrix metalloproteinase 3
Database Link:	NP_002413 Entrez Gene 17392 Mouse Entrez Gene 171045 Rat Entrez Gene 4314 Human P08254
Background:	MMP3 Can degrade fibronectin, laminin, gelatins of type I, III, IV, and V; collagens III, IV, X, and IX, and cartilage proteoglycans. Activates procollagenase. Belongs to the peptidase M10A family. Note: This description may include information from UniProtKB.
Synonyms:	CHDS6; MMP-3; SL-1; STMY; STMY1; STR1
Note:	MMP3 antibody detects endogenous levels of total MMP3
Protein Families:	Druggable Genome, Protease



[View online »](#)

Product images:



Western blot analysis on 293 cell lysate using
MMP3 Antibody