

Product datasheet for **TA347435**

MMP23 (MMP23B) Rabbit Polyclonal Antibody

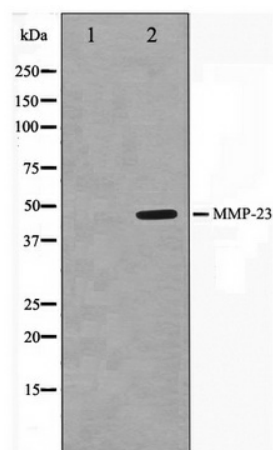
Product data:

Product Type:	Primary Antibodies
Applications:	WB
Recommended Dilution:	WB: 1:500-1:3000
Reactivity:	Human, Mouse, Rat
Host:	Rabbit
Isotype:	IgG
Clonality:	Polyclonal
Immunogen:	The immunogen for anti-MMP23 Antibody: A synthesized peptide derived from human MMP23
Formulation:	Rabbit IgG in phosphate buffered saline , pH 7.4, 150mM NaCl, 0.02% sodium azide and 50% glycerol. Store at -20?. Stable for 12 months from date of receipt
Concentration:	lot specific
Purification:	Affinity-chromatography
Conjugation:	Unconjugated
Storage:	Store at -20°C as received.
Stability:	Stable for 12 months from date of receipt.
Predicted Protein Size:	44 kDa
Gene Name:	matrix metalloproteinase 23B
Database Link:	NP_008914 Entrez Gene 8510 Human O75900
Background:	MMP23B Protease. Belongs to the peptidase M10A family. 3 isoforms of the human protein are produced by alternative splicing.
Synonyms:	MIFR; MIFR-1; MMP22; MMP23A
Note:	MMP23 antibody detects endogenous levels of total MMP23
Protein Families:	Druggable Genome, Protease, Secreted Protein, Transmembrane



[View online »](#)

Product images:



Western blot analysis on SK-OV3 cell lysate using MMP23 Antibody