

## Product datasheet for **TA347434**

### MMP19 Rabbit Polyclonal Antibody

#### Product data:

Product Type:	Primary Antibodies
Applications:	WB
Recommended Dilution:	WB: 1:500-1:3000
Reactivity:	Human, Mouse
Host:	Rabbit
Isotype:	IgG
Clonality:	Polyclonal
Immunogen:	The immunogen for anti-MMP19 Antibody: A synthesized peptide derived from human MMP19
Formulation:	Rabbit IgG in phosphate buffered saline , pH 7.4, 150mM NaCl, 0.02% sodium azide and 50% glycerol. Store at -20?. Stable for 12 months from date of receipt
Concentration:	lot specific
Purification:	Affinity-chromatography
Conjugation:	Unconjugated
Storage:	Store at -20°C as received.
Stability:	Stable for 12 months from date of receipt.
Predicted Protein Size:	57 kDa
Gene Name:	matrix metalloproteinase 19
Database Link:	<a href="#">NP_002420</a> <a href="#">Entrez Gene 58223 Mouse</a> <a href="#">Entrez Gene 4327 Human</a> <a href="#">Q99542</a>
Background:	MMP19 Endopeptidase that degrades various components of the extracellular matrix, such as aggrecan and cartilage oligomeric matrix protein (comp), during development, haemostasis and pathological conditions (arthritic disease). May also play a role in neovascularization or angiogenesis. Hydrolyzes collagen type IV, laminin, nidogen, nascin-C isoform, fibronectin, and type I gelatin
Synonyms:	MMP18; RASI-1

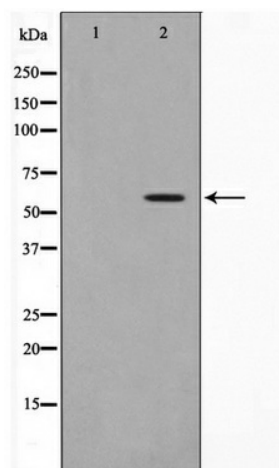


[View online »](#)

**Note:** MMP19 antibody detects endogenous levels of total MMP19

**Protein Families:** Protease, Secreted Protein

**Product images:**



Western blot analysis on HuvEc cell lysate using MMP19 Antibody