

## Product datasheet for **TA347433**

### MMP16 Rabbit Polyclonal Antibody

#### Product data:

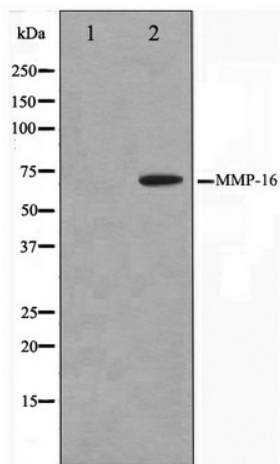
Product Type:	Primary Antibodies
Applications:	WB
Recommended Dilution:	WB: 1:500-1:3000
Reactivity:	Human, Mouse, Rat
Host:	Rabbit
Isotype:	IgG
Clonality:	Polyclonal
Immunogen:	The immunogen for anti-MMP16 Antibody: A synthesized peptide derived from human MMP16
Formulation:	Rabbit IgG in phosphate buffered saline , pH 7.4, 150mM NaCl, 0.02% sodium azide and 50% glycerol. Store at -20?. Stable for 12 months from date of receipt
Concentration:	lot specific
Purification:	Affinity-chromatography
Conjugation:	Unconjugated
Storage:	Store at -20°C as received.
Stability:	Stable for 12 months from date of receipt.
Predicted Protein Size:	69 kDa
Gene Name:	matrix metalloproteinase 16
Database Link:	<a href="#">NP_072086</a> <a href="#">Entrez Gene 17389 Mouse</a> <a href="#">Entrez Gene 65205 Rat</a> <a href="#">Entrez Gene 4325 Human</a> <a href="#">P51512</a>
Background:	MMP16 Endopeptidase that degrades various components of the extracellular matrix, such as collagen type III and fibronectin. Activates progelatinase A. Involved in the matrix remodeling of blood vessels. Isoform short cleaves fibronectin and also collagen type III, but at lower rate. It has no effect on type I, II, IV and V collagen.
Synonyms:	C8orf57; DKFZp761D112; MMP-X2; MT-MMP2; MT-MMP3; MT3-MMP
Note:	MMP16 antibody detects endogenous levels of total MMP16



[View online »](#)

Protein Families: Druggable Genome, Protease, Secreted Protein, Transmembrane

**Product images:**



Western blot analysis on HepG2 cell lysate using MMP16 Antibody