

Product datasheet for **TA347432**

MMP15 Rabbit Polyclonal Antibody

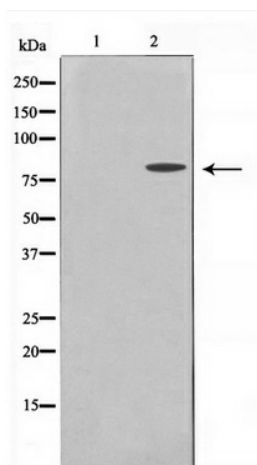
Product data:

Product Type:	Primary Antibodies
Applications:	WB
Recommended Dilution:	WB: 1:500-1:3000
Reactivity:	Human, Mouse
Host:	Rabbit
Isotype:	IgG
Clonality:	Polyclonal
Immunogen:	The immunogen for anti-MMP15 Antibody: A synthesized peptide derived from human MMP15
Formulation:	Rabbit IgG in phosphate buffered saline , pH 7.4, 150mM NaCl, 0.02% sodium azide and 50% glycerol. Store at -20?. Stable for 12 months from date of receipt
Concentration:	lot specific
Purification:	Affinity-chromatography
Conjugation:	Unconjugated
Storage:	Store at -20°C as received.
Stability:	Stable for 12 months from date of receipt.
Predicted Protein Size:	80 kDa
Gene Name:	matrix metalloproteinase 15
Database Link:	NP_002419 Entrez Gene 17388 Mouse Entrez Gene 4324 Human P51511
Background:	MMP15 Endopeptidase that degrades various components of the extracellular matrix. May activate progelatinase A. Belongs to the peptidase M10A family.
Synonyms:	MT2-MMP; MTMMP2; SMCP-2
Note:	MMP15 antibody detects endogenous levels of total MMP15
Protein Families:	Druggable Genome, Protease, Transmembrane



[View online »](#)

Product images:



Western blot analysis on MDA-MB-435 cell lysate using MMP15 Antibody